

ECHO FLORIDA

A N N U A L



October 7–9, 2018

Preconference Learning Lab
Available October 6

**Disney's Grand Floridian Resort
Walt Disney World®, FL**

Course Director

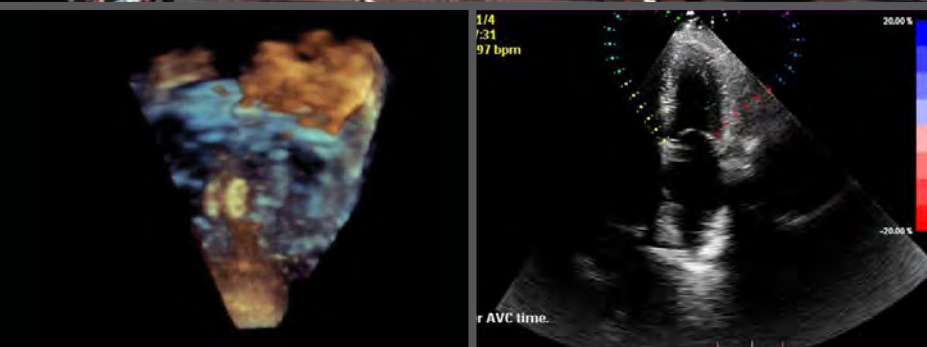
Gerard P. Aurigemma, MD, FASE
UMass Memorial Medical Center
Worcester, MA

Course Co-Director

Linda D. Gillam, MD, MPH, FASE
Past President, ASE
Morristown Medical Center
Morristown, NJ

Learning Lab Director

Madeline Jankowski, RDCS, FASE
Northwestern Memorial Hospital
Chicago, IL



Register now at ASEcho.org/echoflorida



Program Information

Overview of Echo Florida

The Echo Florida course is a comprehensive review of cardiovascular ultrasound in clinical practice. The faculty is composed of experts who will discuss the strengths and limitations of established and emerging technologies and illustrate how these technologies can be used to improve and streamline patient care in a cost-conscious manner.

Course Highlights

There is heavy emphasis on case-based learning.

Topics include:

- Coronary artery disease including stress testing
- Valvular heart disease
- Interventional Imaging
- Heart failure (systolic and diastolic) and cardiomyopathy
- Emerging technologies including contrast, 3D/4D echocardiography and strain imaging
- Complex congenital heart disease
- Case-based demonstrations on role of 2D and real time 3D/4D echocardiography to select, guide, and follow percutaneous structural heart disease interventions such as transcatheter aortic valve replacement and percutaneous mitral valve repair

Preconference Learning Lab *(Additional fee required.)*

A learning lab will be offered on Saturday, October 6. This session requires a separate registration and is included in the total hours of educational content offered at the course.

Left Ventricular Function and Strain

This Learning Lab will be interactive with a combination of live scanning, computer based sessions, and case examples. Sessions will show attendees exactly how to make measurements to assess chamber quantification, systolic and diastolic function, and valvular function.

3D Workshop

The 3D workshop will be a combination of live scanning and computer based sessions focusing on 3D acquisition techniques, as well as cropping and image display. After introductory lectures and live scanning, the session will break into a workshop with different 3D vendors. There will be limited numbers of laptops pre-loaded with 3D examples for hands-on learning. This workshop will cover 3D quantification of ventricular size and function, as well as valvular morphology and function.

Who Should Attend

This course is designed for adult and pediatric cardiologists, cardiovascular surgeons, cardiovascular anesthesiologists, cardiac radiologists, fellows in training, cardiovascular sonographers, cardiovascular nurse specialists, internists, intensivists, and emergency physicians with special interest in clinical cardiology and echocardiography.

Course Registration

Registration fees include breakfasts, lunches, refreshment breaks, access to course materials, and CME credit. ASE members take advantage of reduced registration fees as a benefit of membership. Register online at ASEcho.org/echoflorida.

ASE Membership

Nonmember registrants for the 7th Annual Echo Florida course will receive a complimentary ASE membership through December 31, 2019, with their registration. Membership is only available to those who have never been a member of ASE. ASE serves its members in numerous ways by providing education, advocacy, research, practice guidelines, and a community for their profession. ASE membership includes over \$750 of FREE CME credits a year, in addition to discounts on all ASE educational courses and products. Also included is a monthly subscription to the *Journal of the American Society of Echocardiography* (JASE), help with legislative coding and reimbursement issues, and other career resources. A plethora of online tutorials, webinars, and other educational activities make membership beneficial to echocardiographers located around the world. View the extensive list of member benefits at ASEcho.org.

Accreditation and Designation

The American Society of Echocardiography is accredited by the Accreditation Council for Continuing Medical Education to provide continuing medical education for physicians.

The American Society of Echocardiography designates this live activity for a maximum of 28.5 *AMA PRA Category 1 Credits*[™]. Physicians should claim only the credit commensurate with the extent of their participation in the activity.

Successful completion of this CME activity enables the participant to earn up to 28.5 MOC points in the American Board of Internal Medicine's (ABIM) Maintenance of Certification (MOC) program and/or The American Board of Anesthesiology[®] (ABA) Maintenance of Certification in Anesthesiology Program[®] or MOCA[®]. Participants will earn MOC and/or MOCA points equivalent to the amount of CME credits claimed for the activity. It is ASE's responsibility to submit participant completion information to ACCME for the purpose of granting ABA MOCA and/or ABIM MOC points.



Maintenance of Certification in Anesthesiology Program[®] and MOCA[®] are registered certification marks of the American Board of Anesthesiology[®]. MOCA 2.0[®] is a trademark of the American Board of Anesthesiology[®].

Location Information

Disney's Grand Floridian Resort

Victorian elegance meets modern sophistication at this bayside resort hotel. Relax in the lobby as the live orchestra plays ragtime, jazz, and popular Disney tunes. Bask on the white-sand beach, indulge in a massage, and watch the fireworks light up the sky over Cinderella Castle. Just one stop to Magic Kingdom park on the complimentary Resort Monorail, this timeless Victorian-style marvel evokes Palm Beach's golden era.

Special Features: Beach pool with waterslide and kids play area as well as a courtyard pool, a fitness center and jogging paths, a world-class spa and health club, watercraft rentals and fishing excursions at the Marina, a business center, Wi-Fi access throughout convention center and lobby common areas, in-room high speed internet access, monorail service to Magic Kingdom® Park and Epcot® and Magic Kingdom® Resorts, and access to championship golf courses.

ASE has secured a block of rooms at a discounted rate for attendees at the Grand Floridian Resort & Spa. To make your reservations, please contact the hotel directly at 407-939-4686. Please specify that you are with ASE to secure the group room rate of \$249 per night (tax and other fees not included). You can also visit ASEcho.org/accommodationsef/ to book your room online.

The room block will be held until Tuesday, September 4, 2018, or until the block is sold out. After this date, reservations will be accepted on a space-available basis. A deposit of one night room and tax will be held at the time of the reservation. Deposits will be forfeited for any cancellations occurring five days or less prior to arrival.

Extend Your Stay: Once you arrive, you will discover the Walt Disney World® Resort offers more magical experiences than you ever dreamed possible. Don't pass up the chance to add an extra few days before or after your meetings for a spectacular golf or spa getaway or the perfect vacation with family and friends. Disney's Grand Floridian Resort & Spa will extend the same room rates* to any nights you add to your visit.

**Room Rates are subject to change without notice and are based on availability. Group rates may not be combined with any other discounts or offers.*

Make Time for the Magic!

As a Disney Resort Guest, you will enjoy special benefits that make your Walt Disney World® stay easier and more relaxing than ever. These benefits provide everything from extra time in the Theme Parks and convenient transportation to more magic all around.

Purchase Theme Park Tickets in Advance

Available only to meeting attendees, their guests, and family members, Disney's multi-day and half-day meeting/convention tickets are designed to fit any agenda and can't be purchased at the Theme Park gates. To receive these special Theme Park tickets, you must purchase online at MyDisneyGroup.com/echo18 or call 407-827-6777.

Enhanced! Extra Magic Hour Benefit

Each day one of the Theme Parks opens an hour early or stays open up to three hours after regular Park hours for guests staying at select Disney Resorts, giving you even more time to enjoy select attractions before and after your meetings. This is a great way for you to maximize the value of your Disney Theme Park Tickets based around your schedule! *Valid Theme Park admission and Walt Disney World® Resort ID are required.*

Convenient Walt Disney World® Transportation

If you are arriving by air at Orlando International Airport, Disney's legendary service starts the moment you touch down and continues throughout your stay. **Disney's Magical Express®** – Take advantage of the latest innovation in Disney's legendary commitment to service and convenience. This exclusive complimentary shuttle and luggage delivery service conveniently takes you from the airport directly to your Disney Resort and back again when it's time to return. It's the hassle-free benefit that allows you to arrive at your meeting relaxed and stress-free. To book, call 407-827-6777 or visit MyDisneyGroup.com/Echo18 for more information.

During your stay, enjoy the convenience of Disney transportation throughout the Walt Disney World® Resort. Just steps from your door, boats and motor coaches are waiting to take you to and from the Theme Parks, Water Parks, the Downtown Disney® area and more.



Invited Faculty

Schedule of Events

Course Director

Gerard P. Aurigemma, MD, FASE
UMass Memorial Medical Center
Worcester, MA

Learning Lab Director

Madeline Jankowski, RDCS, FASE
Northwestern Memorial Hospital
Chicago, IL

Faculty

Bryon A. Gentile II, MD
UMass Memorial Medical Center
Worcester, MA

Steven A. Goldstein, MD, FASE
MedStar Washington Hospital Center
Washington, DC

John Gorcsan III, MD, FASE
Washington University in St. Louis
St. Louis, MO

Konstantinos P. Koulogiannis, MD
Morristown Medical Center
Morristown, NJ

Matthew Parker, MD
UMass Memorial Medical Center
Worcester, MA

Course Co-Director

Linda D. Gillam, MD, MPH, FASE
Past President, ASE
Morristown Medical Center
Morristown, NJ

Vera H. Rigolin, MD, FASE
Immediate Past President, ASE
Northwestern University
Chicago, IL

Muhamed Saric, MD, PhD, FASE
New York University
New York, NY

Vincent L. Sorrell, MD, FASE
University of Kentucky
Lexington, KY

Lissa Sugeng, MD, MPH, FASE
Yale University
New Haven, CT

Doreen Defaria Yeh, MD
Massachusetts General Hospital
Boston, MA

Saturday, October 6, 2018

Learning Lab: Left Ventricular Function and Strain (Additional Fee Required)

7:00 AM	Breakfast
7:45 AM	Introduction to the Learning Lab <i>G. Aurigemma</i>
7:55 AM	Basic Left Ventricular Function <i>G. Aurigemma, V. Sorrell</i>
8:15 AM	Introduction to Strain: Theory and Applications <i>J. Gorcsan</i>
8:55 AM	Optimizing Imaging for Strain <i>J. Gorcsan, M. Jankowski</i>
9:55 AM	Refreshment Break
10:25 AM	Workshop: Review of Strain Cases <i>G. Aurigemma, J. Gorcsan, V. Sorrell</i>
12:25 PM	Lunch and Visit Exhibits

Learning Lab: 3D Workshop (Additional Fee Required)

1:25 PM	Introduction to 3D Learning Lab <i>G. Aurigemma</i>
1:35 PM	Cardiac Anatomy: Learning the Basics for 3D <i>L. Sugeng</i>
2:05 PM	Basics of 3D TTE <i>M. Jankowski, V. Rigolin</i>
2:45 PM	Refreshment Break
3:00 PM	Valvular Quantification: The Impact of 3D for Valvular Morphology and Function <i>V. Rigolin, L. Sugeng</i>
3:25 PM	Optimizing 3D TEE Acquisition: Tricks of the Trade <i>L. Sugeng</i>
4:15 PM	Hands-on Workshop: Quantification of Chambers <i>B. Gentile, M. Jankowski, K. Koulogiannis, M. Parker</i>
5:15 PM	Adjourn

"I have attended many courses over the years. This course was very impressive in the delivery of useful information in a concise manner."

2017 Echo Florida Attendee

Schedule of Events

Sunday, October 7, 2018			
General Echocardiography			
<i>Moderator: L. Gillam</i>			
7:00 AM	Breakfast and Visit Exhibits		
7:45 AM	Welcome <i>G. Aurigemma</i>	2:10 PM	Expert Consensus for Multimodality Imaging Evaluation of Adult Patients During and After Cancer Treatment <i>V. Sorrell</i>
7:50 AM	Past President's Address <i>V. Rigolin</i>	2:30 PM	Refreshment Break and Visit Exhibits
8:00 AM	Chamber Quantification Guidelines Update I: Left Heart Measurements <i>L. Gillam, M. Jankowski</i>	3:00 PM	Regurgitant Valvular Quantitation: What is New in the Guidelines <i>V. Rigolin</i>
8:25 AM	Chamber Quantification Guidelines Update II: Right Heart Measurements <i>L. Gillam, M. Jankowski</i>	3:20 PM	Where Contrast Administration Makes a Difference <i>L. Gillam</i>
8:45 AM	Strain Imaging: Myocardial Mechanics Simplified and Applied <i>J. Gorcsan</i>	3:40 PM	Stress Echo Cases: Are You As Good As The Experts? <i>M. Saric, V. Sorrell, L. Sugeng</i>
9:15 AM	Diastolic Function Assessment: The Es, As, and Es <i>G. Aurigemma</i>	4:00 PM	Coups, Goofs, and Things I Have Learned in the Past Year: Part II <i>S. Goldstein, M. Saric, V. Sorrell</i>
9:40 AM	Optimizing Echo Acquisition for Strain and Diastology <i>M. Jankowski</i>	4:45 PM	Adjourn
10:05 AM	Question and Answer	Monday, October 8, 2018	
10:15 AM	Refreshment Break and Visit Exhibits	Valvular Heart Disease Part I	
10:45 AM	Strain in Clinical Practice in 2018: Case Reviews <i>G. Aurigemma, J. Gorcsan, V. Sorrell</i>	<i>Moderator: M. Saric</i>	
11:10 AM	3D Echo: Acquisition, Cropping, and Display <i>L. Sugeng</i>	7:00 AM	Breakfast and Visit Exhibits
11:30 AM	Cases: 3D Application in Practice <i>V. Rigolin, L. Sugeng</i>	7:45 AM	Basic and Advanced Assessment of Aortic Stenosis <i>V. Rigolin</i>
11:50 AM	Coups, Goofs, and Things I Have Learned in the Past Year: Part I <i>G. Aurigemma, L. Gillam, V. Rigolin, L. Sugeng</i>	8:20 AM	Low Gradient, Severe Aortic Stenosis: Dobutamine Echo to the Rescue <i>L. Gillam</i>
12:10 PM	Lunch and Visit Exhibits	8:40 AM	Back to Basics: Common Errors in Quantitation in Everyday Practice <i>S. Goldstein, M. Jankowski, M. Parker</i>
1:10 PM	Performing a Comprehensive TEE Examination <i>V. Rigolin</i>	8:55 AM	Rheumatic and Degenerative, Calcific Mitral Stenosis <i>L. Sugeng</i>
1:30 PM	Guidelines for the Use of Echocardiography in the Evaluation of a Cardiac Source of Embolism <i>M. Saric</i>	9:10 AM	Assessing Prosthetic Valve Function: Differentiating Normal From Stenotic or Regurgitant <i>M. Parker</i>
1:50 PM	Clinical Recommendations for Multimodality Cardiovascular Patients with Pericardial Disease <i>S. Goldstein</i>	9:30 AM	Question and Answer
		9:50 AM	Refreshment Break and Visit Exhibits

Schedule of Events

Valvular Heart Disease Part II

Moderator: *S. Goldstein*

10:20 AM	Smoke, Sludge, and Tsuris: Imaging the Left Atrial Appendage <i>B. Gentile</i>
10:40 AM	Echo in Asymptomatic Mitral Regurgitation and Aortic Regurgitation <i>M. Saric</i>
11:00 AM	Coups, Goofs, and Things I Have Learned in the Past Year: Part III <i>S. Goldstein, M. Parker, M. Saric</i>
11:40 AM	Question and Answer
12:00 PM	Lunch and Visit Exhibits

Heart Failure

Moderator: *J. Gorcsan*

1:00 PM	Restrictive and Infiltrative Cardiomyopathy: Recognition By Echo <i>G. Aurigemma</i>
1:20 PM	Hypertrophic Cardiomyopathy <i>L. Gillam</i>
1:40 PM	Cases: Strain in Myocardial Disease <i>J. Gorcsan</i>
2:00 PM	MRI in Myocardial Disease: Where You Must Use It in 2018 <i>V. Sorrell</i>
2:20 PM	Question and Answer
2:40 PM	Refreshment Break and Visit Exhibits
3:10 PM	Cases: Discrepant Valvular Quantification: Stenosis <i>L. Gillam, V. Rigolin</i>
3:30 PM	Cases: Valvular and Myocardial Disease: Regurgitation <i>G. Aurigemma</i>
3:50 PM	Stump the Stars: Echo Cases and Discussion <i>G. Aurigemma, L. Gillam, M. Parker</i>

Fun and Games

4:20 PM	Rapid Fire Echo Case Quiz: Everyone Plays! <i>J. Gorcsan</i>
5:00 PM	Adjourn

Tuesday, October 9, 2018

Clinical Echocardiography

Moderator: *G. Aurigemma*

7:00 AM	Breakfast and Visit Exhibits
8:00 AM	TAVR: Procedure Guidance by Echo <i>M. Saric</i>
8:25 AM	The Forgotten Valve: New Tricuspid Interventions <i>V. Rigolin</i>
8:50 AM	Percutaneous Mitral Valve Repair <i>S. Goldstein</i>
9:10 AM	What I Have Learned from 3D Imaging of Heart Valve Disease <i>S. Goldstein, V. Rigolin, L. Sugeng</i>
9:40 AM	Left Atrial Appendage Closure Devices <i>B. Gentile</i>
10:00 AM	Refreshment Break and Visit Exhibits
10:30 AM	Cases: Interventional Imaging <i>S. Goldstein, M. Parker</i>
11:10 AM	Congenital Heart Disease Part I: The Unrepaired Adult <i>D. Defaria Yeh</i>
11:30 AM	Congenital Heart Disease Part II: The Repaired Adult <i>D. Defaria Yeh</i>
11:50 AM	Infectious Endocarditis <i>S. Goldstein</i>
12:10 AM	Athlete's Heart vs. Cardiomyopathy? <i>L. Gillam</i>
12:30 PM	Question and Answer
1:00 PM	Lunch and Visit Exhibits
2:00 PM	The Role of Echo in Pulmonary Hypertension <i>L. Gillam</i>
2:20 PM	Pregnancy and Heart Disease: The Role of Echo <i>D. Defaria Yeh</i>
2:40 PM	Cases: Stress Testing in Valvular Disease <i>M. Saric, V. Sorrell</i>
3:00 PM	Cases: Adult Congenital Heart Disease <i>D. Defaria Yeh</i>
3:20 PM	Stump the Stars: Echo Cases and Discussion <i>G. Aurigemma, S. Goldstein, J. Gorcsan</i>
4:00 PM	Adjourn

“Coups, Goofs, and Things I Have Learned... was THE BEST part of the conference.”

2017 Echo Florida Attendee



Register online at
ASEcho.org/echoflorida

October 7-9, 2018

Preconference Learning Lab Available on October 6

Disney's Grand Floridian Resort

Walt Disney World®, FL

Your Echo Florida registration fee includes breakfasts, lunches, refreshment breaks, access to course materials, and 28.5 hours of CME credits and MOC points and/or MOCA.

Name:

FIRST NAME

MIDDLE INITIAL

LAST NAME

Credential: MD DO PhD RN RCS RDCS Other

Institution:

Email Address:

(All correspondence regarding your registration including your confirmation will be sent to this email address.)

Street Address:

City: State/Province: Zip/Postal Code: Country:

Telephone: Fax:

ASE encourages participation by all individuals. If you have a disability or other specific needs including dietary, advance notification will help ASE to better serve you. Please contact ASE by email at EchoFlorida@asecho.org or telephone at 919-861-5574.

Registration Fees	THROUGH SEPTEMBER 7, 2018	AFTER SEPTEMBER 7, 2018
ASE Physician Member	\$775	\$875
Physician Nonmember*	\$925	\$1,025
ASE Sonographer/Allied Health Member/Fellow Member*	\$575	\$675
Sonographer/Allied Health Nonmember/Fellow Nonmember*	\$725	\$825
Preconference Optional Session Fees Attendees must register for this workshop in advance in order to attend due to limited seating available.	ASE Member	Nonmember
Learning Lab: October 6, 2018	\$350	\$450

Attendees must register in advance in order to attend due to limited seating. More information on this educational opportunity are available online at ASEcho.org/echoflorida.

* This registration fee includes ASE membership through December 31, 2019. Membership is only available to those who have never been a member of ASE.

Payment Information Payment must accompany this form.

Check (payable to American Society of Echocardiography in U.S. dollars drawn on a U.S. bank) **Credit Card:** Visa MasterCard American Express

Cardholder's Name:

Card Number: Expiration Date: CVC #:

Registration cancellation fees may apply and ASE reserves the right to determine if a refund is possible. Please see the full cancellation policy online at ASEcho.org/echoflorida.

Register online and receive an immediate receipt! ASEcho.org/echoflorida

AMERICAN SOCIETY OF ECHOCARDIOGRAPHY INC, P.O. Box 890082, Charlotte, NC 28289-0082

Phone: 919-861-5574 • Fax: 919-882-9900 • Email: registrar@asecho.org • Website: ASEcho.org/echoflorida



ASE Foundation

American Society of Echocardiography
2530 Meridian Parkway
Suite 450
Durham, NC 27713

NON PROFIT ORG
US POSTAGE
PAID
RALEIGH, NC
PERMIT #1854

ECHO 7th FLORIDA

October 7-9, 2018
Preconference Learning Lab
Available on October 6

REGISTER NOW at
ASEcho.org/echoflorida



Course Director
Gerard P. Aurigemma, MD, FASE
UMass Memorial Medical Center
Worcester, MA



Course Co-Director
Linda D. Gillam, MD, MPH, FASE
Past President, ASE
Morristown Medical Center
Morristown, NJ



Learning Lab Director
Madeline Jankowski, RDCS, FASE
Northwestern Memorial Hospital
Chicago, IL