

# ECHO FLORIDA

# ANNUAL 8th



## FINAL PROGRAM

**October 13 – 15, 2019**

Preconference Learning Lab  
October 12

Disney's Yacht & Beach Club Resorts  
Walt Disney World®, FL

### Course Director

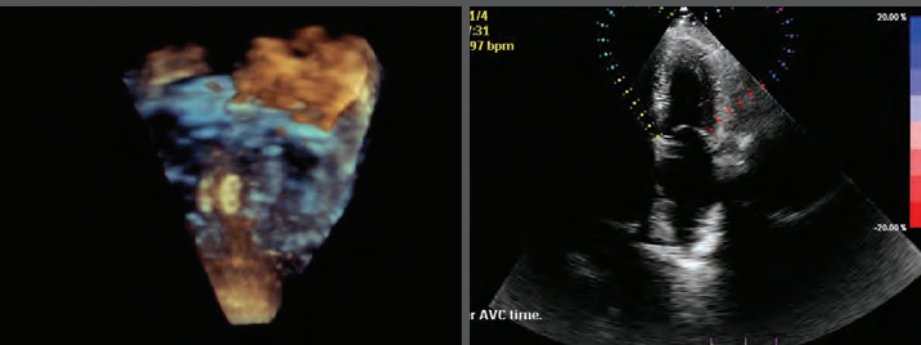
Gerard P. Aurigemma, MD, FASE  
UMass Memorial Medical Center  
Worcester, MA

### Course Co-Director

Linda D. Gillam, MD, MPH, FASE  
Past President, ASE  
Morristown Medical Center  
Morristown, NJ

### Learning Lab Director

Matt Umland, ACS, RDCS, FASE  
Aurora Health Care  
Milwaukee, WI



# Welcome Message and Faculty

## Welcome Message

Welcome to our 8th Annual Echo Florida course, sponsored by ASE. Along with Linda Gillam, Matt Umland, and the rest of our expert faculty, we hope to provide you with a comprehensive and entertaining review of echocardiography in contemporary clinical practice. As in the past, the goal of Echo Florida is to introduce the newest applications of echocardiography while also emphasizing the applications of basic and advanced echo to daily practice.

As course director, my major goal is to make the presentations relevant to the day-to-day practice of echocardiography. While we cover contemporary research in echocardiography, this is not what Echo Florida is primarily designed to highlight. Instead, our goal is to give the audience insight into how the faculty evaluates echo data as applied to clinical cardiology decision making.

We have designed the sessions so that they are entertaining and interactive; to that end we will engage the audience by using the ASE Courses app to pose questions during the presentations. We will continue the age-old tradition (started two years ago!) of having the faculty share cases that highlighted their skill and experience, and perhaps more importantly, where they learned a valuable lesson.

Parenthetically, I would add that the faculty have been recruited not only because they are academic stars, but because they are superb clinicians, approachable people, and share a passion for teaching.

**A brief review of the program:** Saturday will feature two preconference sessions. We will devote the entire morning session to the analysis of LV function by strain imaging, using didactic sessions, case reviews, and hands-on strain computations, led by our team of experts. The afternoon session will be devoted to three-dimensional (3D) echocardiography. This 3D workshop will comprise both lectures and computer-based sessions focusing on 3D acquisition techniques as well as cropping and image display. Our hope is that participants will gain an enhanced knowledge of 3D quantification of ventricular size and function, as well as valvular morphology and function.

**Our main course, Sunday through Tuesday,** will focus on application of echocardiography in valve disease, coronary artery disease, heart failure, and a variety of clinical scenarios. We start with a review of general echocardiography, covering the guidelines published by ASE. During the valvular heart disease sessions we will cover the hemodynamic assessment of valve disease and also introduce attendees to the role of echocardiography in structural heart disease interventions.

**The final day** will cover important clinical areas in echocardiography with relevant topics such as congenital heart disease, athlete's heart, cardio-oncology, and pulmonary hypertension. Case-based sessions throughout the conference will help highlight the teaching points of the lecture-based presentations, as well as a thought-provoking session on the potential role of artificial intelligence in echocardiography.

Orlando is a great place to bring your family for fun and entertainment. We hope that the passion of our faculty for clinical echocardiography is evident, and you enjoy Echo Florida.

Welcome to Orlando.



**Course Director**  
**Gerard P. Aurigemma,**  
**MD, FASE**  
UMass Memorial  
Medical Center  
Worcester, MA



**Course Co-Director**  
**Linda D. Gillam, MD, FASE**  
Past President, ASE  
Morristown Medical Center  
Morristown, NJ



**Learning Lab Director**  
**Matt Umland, ACS,**  
**RDCS, FASE**  
Aurora Health Care  
Milwaukee, WI

## Faculty

**Doreen Defaria Yeh, MD**  
Massachusetts General Hospital  
Boston, MA

**Bryon A. Gentile II, MD**  
UMass Memorial Medical Center  
Worcester, MA

**John Gorcsan III, MD, FASE**  
Washington University in St. Louis  
St. Louis, MO

**Madeline Jankowski, RDCS, FASE**  
Northwestern Memorial Hospital  
Chicago, IL

**Konstantinos P. Koulogiannis, MD**  
Morristown Medical Center  
Morristown, NJ

**Matthew Parker, MD, FASE**  
UMass Memorial Medical Center  
Worcester, MA

**Amit Patel, MD**  
University of Chicago Medical Center  
Chicago, IL

**Muhamed Saric, MD, PhD, FASE**  
New York University  
New York, NY

**Vincent L. Sorrell, MD, FASE**  
University of Kentucky  
Lexington, KY

**Lissa Sugeng, MD, MPH, FASE**  
Yale University  
New Haven, CT

**Madhav Swaminathan, MD, FASE**  
President, ASE  
Duke University Medical Center  
Durham, NC

# Program Information

## Overview of Echo Florida

The Echo Florida course is a comprehensive review of cardiovascular ultrasound in clinical practice. The faculty is composed of experts who will discuss the strengths and limitations of established and emerging technologies and illustrate how these technologies can be used to improve and streamline patient care in a cost-conscious manner.

## Target Audience

This course is designed for adult and pediatric cardiologists, cardiovascular surgeons, cardiovascular anesthesiologists, cardiac radiologists, fellows in training, cardiovascular sonographers, cardiovascular nurse specialists, internists, intensivists, and emergency physicians with a special interest in clinical cardiology and echocardiography.

## Learning Objectives

### Learning Lab (Preconference)

Upon completion of these sessions, participants will be better able to:

1. Interpret the clinical utility of strain measurements, and how they are used in contemporary cardiology.
2. Demonstrate the use of different software programs to measure global longitudinal strain.
3. Manipulate, crop, and display 3D echocardiographic data sets and make measurements.
4. Extend the role of 3D echo from transthoracic and transesophageal images, and instances where they provide incremental information.

### Main Conference

Upon completion of these sessions, participants will be better able to:

1. Analyze and quantify systolic and diastolic function by echocardiography, and predict the role of strain imaging.
2. Differentiate the indications for echocardiographic contrast agents.
3. Distinguish the findings of echocardiography in various forms of infective endocarditis.
4. Quantify valvular regurgitation using PISA.
5. Summarize the role of standard and advanced echo (3D echo, strain) in contemporary echocardiography.
6. Predict the selection process for patients with TAVR and the role of echocardiography in monitoring patients who have undergone TAVR.
7. Discover and assess the role of echocardiography in deployment of percutaneous devices, such as appendage occlusion devices.
8. Outline echocardiographic features of common complex congenital lesions found in adults.
9. Interpret normal and abnormal findings of prosthetic valve function.
10. Identify the complementary nature of competing imaging technologies, such as MRI and CT.

## Preconference Learning Lab

*(Additional fee required. Please visit the ASE registration desk to check availability.)*

This learning lab is offered on Saturday, October 12. It requires a separate registration fee and is included in the total hours of educational content offered at the course.

### Left Ventricular Function and Strain

This learning lab will be interactive computer-based sessions and case examples. Sessions will show attendees exactly how to make measurements to assess chamber quantification, systolic and diastolic function, and valvular function.

### 3D Workshop

The 3D workshop will be a computer-based session focusing on 3D acquisition techniques, as well as cropping and image display. After introductory lectures, the session will break into a workshop with different 3D vendors. There will be limited numbers of laptops pre-loaded with 3D examples for hands-on learning. This workshop will cover 3D quantification of ventricular size and function, as well as valvular morphology and function.

## Disclaimer

The information provided during this CME activity is for continuing education purposes only and is not meant to substitute for the independent medical judgment of a healthcare provider relative to diagnostic and treatment options of a specific patient's condition.

## Accreditation and Designation

This activity has been planned and implemented in accordance with the Essential Areas and Policies of the Accreditation Council for Continuing Medical Education (ACCME) through the joint providership of the American Society of Echocardiography and the American Society of Echocardiography Education and Research Foundation. The American Society of Echocardiography is accredited by the ACCME to provide continuing medical education for physicians.

ASE designates this live activity for a maximum of **30.5 AMA PRA Category 1 Credits™** for attending both the Main Conference and Learning Lab.

ASE designates the Echo Florida Learning Lab for a maximum of 7.75 hours and a maximum of 22.75 hours for the Main Conference. Attendees should claim only the credit commensurate with the extent of their participation in the activity.



# Program Information

Successful completion of this CME activity enables the participant to earn up to **30.5 MOC points in the American Board of Internal Medicine's (ABIM) Maintenance of Certification (MOC) program and/or The American Board of Anesthesiology® (ABA) Maintenance of Certification in Anesthesiology Program® or MOCA®**. Participants will earn MOC and/or MOCA points equivalent to the amount of CME credits claimed for the activity. It is ASE's responsibility to submit participant completion information to ACCME for the purpose of granting ABA MOCA and/or ABIM MOC points.



*Maintenance of Certification in Anesthesiology Program® and MOCA® are registered certification marks of the American Board of Anesthesiology®. MOCA 2.0® is a trademark of the American Board of Anesthesiology®.*

## Daily breakdown of CME credits:

Saturday, October 12 Learning Lab = 7.75

Sunday, October 13 = 9.00

Monday, October 14 = 6.75

Tuesday, October 15 = 7.00

The ACCME and the European Board of Accreditation in Cardiology (EBAC) recognize each other's accreditation systems as substantially equivalent. To obtain EBAC credit for participation in this activity, submit evidence of participation directly to EBAC ([www.ebac-cme.org](http://www.ebac-cme.org)).

The European Union of Medical Specialists (UEMS)-European Accreditation Council for Continuing Medical Education (EACCME) has an agreement of mutual recognition of continuing medical education (CME) credit with the American Medical Association (AMA). European physicians interested in converting AMA PRA Category 1 Credit™ into European CME credit (ECMEC) should contact the UEMS ([www.uems.eu](http://www.uems.eu)).

ARDMS, CCI, and Sonography Canada recognize ASE's certificates and have agreed to honor the credit hours toward their registry requirements for sonographers.

All or a portion of this educational activity may meet the CME requirement for IAC Echocardiography accreditation.

This activity is eligible for Section 1 credits in the Royal College of Physicians and Surgeons of Canada's Maintenance of Certification (MOC) Program. Participants must log into MAINPORT to claim this activity.

## Disclosure

ASE is committed to ensuring that its educational mission, and all sponsored educational programs are not influenced by the special interests of any corporation or individual, and its mandate is to retain only those speakers whose financial interests can be effectively resolved to maintain the goals and educational integrity of the program. While a monetary or professional affiliation with a corporation does not necessarily influence

a speaker's presentation, the Essential Areas and policies of the ACCME require that any relationship that could possibly conflict with the educational value of the program be resolved prior to the educational session and disclosed to the audience. In accordance with these policies, ASE implemented mechanisms prior to the planning and implementation of this CME activity to identify and resolve conflicts of interest for all individuals in a position to control content. Disclosure information is referenced and can be found beginning on page 11 of this program.

## Commercial Support Disclosure Statement

**Educational Grants:** This activity is supported in part by unrestricted educational grants from Abbott, Edwards Lifesciences, GE Healthcare, Lantheus Medical Imaging, and Medtronic.

**In-Kind Donations:** This activity is supported in part by in-kind donations of devices or software from GE Healthcare, Philips, Siemens Healthineers, and TOMTEC.

## How to Obtain Credit

To claim your CME for Echo Florida, please follow the steps below using your Mozilla Firefox, Google Chrome, or Safari browser. **Internet Explorer will not work.** The deadline to claim credit is **November 20, 2019.**

### ASE Members:

1. Go to ASEcho.org and log in to the Member Portal with your username (email) and password.
2. Click on Education then ASEUniversity (This will take you directly to your ASEUniversity member profile).
3. Proceed to the instructions below under "To Claim Credit".

### Nonmembers:

1. Go to ASEUniversity.org.
2. Log into your existing account using the red "Log In" button on the top right or create a new account.
3. Click on "My Account" on the top right.
4. Proceed to the instructions below under "To Claim Credit".

### To Claim Credit:

1. Click "Add Access Code" on the left navigation bar and select "Click here to redeem it".
2. Enter the code "Florida2019" and click the "Redeem Code" button.
3. Once verified, click "CE Information" tab and "Take Exam" button to claim your CME credit. CME credits are not earned until the entire evaluation has been completed.
4. Remember to enter your ABIM, ABA, ARDMS or CCI number and birth date if you choose to have credits for this meeting submitted to your associated board. There is a space for this information on the first page of the evaluation.
5. Once you have completed the evaluation, your certificate will be available for immediate download and can also be found under "My Account" in the "My Transcripts" section.

# Attendee Information and Regulations

## Registration Location and Hours

The ASE Registration desk is located in the Asbury Rotunda, located in the Disney Yacht & Beach Club Resorts' Convention Center. The Registration desk will be staffed during the following hours:

Friday, October 11, 2019 . . . . . 4:00 PM – 6:00 PM  
Saturday, October 12, 2019 . . . . . 7:00 AM – 5:15 PM  
Sunday, October 13, 2019 . . . . . 7:00 AM – 5:05 PM  
Monday, October 14, 2019 . . . . . 7:00 AM – 4:00 PM  
Tuesday, October 15, 2019 . . . . . 7:00 AM – 4:30 PM

## Food Functions

ASE will provide breakfast, lunch, and coffee breaks for all registered attendees of the main conference Sunday–Tuesday in Asbury Hall. Please refer to the program schedule beginning on page 7 for the times.

ASE will provide breakfast, lunch, and coffee breaks to all registered Learning Lab attendees on Saturday, October 12 in Asbury Hall.

Disney's Yacht & Beach Club Resorts offers their guests a variety of dining options. Please see page 6 for more details.

## Internet Access

There is complimentary wireless internet available throughout the Disney's Yacht & Beach Club Resorts. Attendees of this course also receive complimentary wireless internet in their guest rooms.

## Business Center

The Business Center is located in the Convention Center and is open daily. It offers fax, photo-copier, mail, and computer services.

## Safety

Audience seating is on a first-come, first-served basis. According to fire code, a session must be closed if the room fills to capacity. Inappropriate behavior or undesirable conduct, including, but not limited to, verbal or physical abuse, whether threatened or performed, will not be permitted or tolerated. You must wear your name badge at all times when attending the session or events.

## Photography/AV Policy

No person may record any portion of the ASE Echo Florida Course, either by video, still or digital photography, audio, or any other recording or reproduction mechanism. This includes recording of presentations and supporting audio visual materials. Taking photos of, or recording the content of, presentation slides is also prohibited and is considered intellectual piracy. Attendees who ignore this policy will be asked to leave the educational session and are at risk of losing their name badge and attendance privileges. Photographs taken for the purpose of sharing on social media are allowed, but should avoid showing presentation slides. Please use **#EchoFlorida** when posting on social media. ASE reserves the rights to all recordings or reproductions at ASE meetings. Please be aware that during the ASE Echo Florida Course, attendees, vendors, guests, and exhibitors may be photographed or videotaped by ASE staff capturing the event. Some of these photographs or videos may be displayed by ASE in future publications or other materials. By virtue of your attendance, you agree to allow ASE to use photographs of you in its promotional materials.

## Children

Independent childcare provider Kid's Nite Out offers one-to-one babysitting in the comfort of your Walt Disney World Resort hotel room. For more information, please call 407-828-0920, 8:00 AM to 9:00 PM, 7 days a week.

## Mobile Device Use

We encourage you to use your mobile device to download the ASE Courses app. After you have downloaded the app, you will have access to the entire meeting program at your fingertips. You can also use the app to ask questions during the sessions you attend. Please remember to turn your mobile device to silent or vibrate mode.

**Search "ASE Courses" in the Google Play and Apple Stores to download.**



# Location Information

## Disney's Yacht & Beach Club Resorts

Delight in the formal grace of a grand New England-style yacht club at this lakeside hotel. Relax in the inviting elegance of a plush lobby replete with nautical touches, explore the whimsical Stormalong Bay and rent a variety of watercraft from Bayside Marina. Sharing many amenities with its pastel-toned sister, Disney's Beach Club Resort, Disney's Yacht Club Resort is walking distance to Epcot® and a convenient boat ride to Disney's Hollywood Studios®.

**Special Features:** Beachside Water Recreation Area: Make a splash at Stormalong Bay, a three-acre water wonderland! Climb the mast of a life-size shipwreck to breeze down one of the highest hotel waterslides at Walt Disney World Resort. Catch currents in the lazy circular river, relax in one of three whirlpool spas and soak up the sun on the elevated tanning deck. Children can enjoy the gently sloping, beach entry and have a blast in the kiddie pool — complete with a miniature waterslide.

**Magic at Your Fingertips:** Plan and share your Walt Disney World vacation with the My Disney Experience mobile app. Manage your Disney Resort reservation, find Character Greeting locations and times, and access Resort Transportation routes all with the touch of your finger. Download the My Disney Experience app at the App Store or Google Play.

## Make Time for the Magic!

As a Disney Resort Guest, you will enjoy special benefits that make your Walt Disney World® stay easier and more relaxing than ever. These benefits provide everything from extra time in the Theme Parks and convenient transportation.

### Purchase Theme Park Tickets in Advance

Available only to meeting attendees, their guests, and family members, Disney's multi-day and half-day Meeting/Convention tickets are designed to fit any agenda and can't be purchased at the Theme Park gates. To receive these special Theme Park tickets, you must purchase online at [MyDisneyGroup.com/Echo2019](http://MyDisneyGroup.com/Echo2019) or call 407-939-4686.

### Enhanced! *Extra Magic Hour* Benefit

Each day one of the Theme Parks opens an hour early or stays open up to three hours after regular Park hours for guests staying at select Disney Resorts, giving you even more time to enjoy select attractions before and after your meetings. This is a great way for you to maximize the value of your Disney Theme Park Tickets based around your schedule! Valid Theme Park admission and Walt Disney World® Resort ID are required.

### Convenient Walt Disney World® Transportation

If you are arriving by air at Orlando International Airport, Disney's legendary service starts the moment you touch down and continues throughout your stay. **Disney's Magical Express®** — Take advantage of the latest innovation in Disney's legendary commitment to service and convenience. This exclusive complimentary shuttle and luggage delivery service conveniently takes you from the airport directly to Disney's Yacht & Beach Club Resorts and back again when it's time to return. It's the hassle-free benefit that allows you to arrive at your meeting relaxed and stress-free. To book, call 407-939-4686 or visit [MyDisneyGroup.com/Echo2019](http://MyDisneyGroup.com/Echo2019) for more information.

During your stay, enjoy the convenience of Disney transportation throughout the Walt Disney World®. Enjoy a leisurely cruise on a charming water launch or stately ferryboat or take in the sites from an air-conditioned bus. Just steps from your door, boats and motor coaches are waiting to take you to and from the Theme Parks, Water Parks, the Downtown Disney® area, and more.

## Disney's Yacht & Beach Club Resorts Dining Options

**Ale & Compass Restaurant:** Dine on New England comfort food and classic seafood dishes in a coastal-inspired restaurant that's reminiscent of a cozy lighthouse. Serving breakfast, lunch, and dinner.

**Cape May Café:** Delight kids and adults alike with a Disney Character breakfast and a seafood dinner buffet! Serving breakfast, lunch, and dinner.

**Crew's Cup Lounge:** Ready all, row! Race to a place with New England favorites like tender lobster rolls and creamy chowder. Available for lunch, dinner, and late night dining.

**Beach Club Marketplace:** Enjoy a hot, made-to-order meal and stock up on snacks before heading out for a day of fun in the parks. Available for breakfast, lunch, dinner, and late night dining.

**Hurricane Hanna's Waterside Bar and Grill:** Brace for frosty beverages and beautiful bay views at this not-so-blustery walk-up bar. Offering lunch and bar service.

**Martha's Vineyard:** Gather for a glass — or bottle — of wine at this casual lounge reminiscent of a New England beach house. Available for breakfast, lunch, dinner, and late night dining.

**The Market at Ale & Compass:** Find hot and cold offerings with grab-and-go convenience for breakfast, lunch, and dinner.

**Yachtsman Steakhouse:** Savor premium steaks, fresh seafood, and more at this family-friendly, New England-style steakhouse. Serving dinner.

Disney's Yacht & Beach Club Resorts offers room service for breakfast, lunch, dinner, and late night dining in the comfort of your room. In addition, the property is conveniently connected by water taxi, bus, or walking paths to numerous Disney restaurants within the Epcot Resort area.



# Schedule of Events

## Friday, October 11, 2019

|                    |  |
|--------------------|--|
| 4:00 PM–<br>6:00PM | <b>Preconference Learning Lab Registration</b><br>Asbury Rotunda |
|--------------------|--|

## Saturday, October 12, 2019

### Learning Lab: Left Ventricular Function and Strain

(Additional Fee Required)

Grand Harbor Ballroom South

|          |  |
|----------|--|
| 7:00 AM  | <b>Registration and Breakfast</b><br>Asbury Rotunda and Asbury Hall                    |
| 7:45 AM  | <b>Introduction to the Learning Lab</b><br><i>G. Aurigemma</i>                         |
| 7:55 AM  | <b>Introduction to Strain: Theory and Applications</b><br><i>J. Gorcsan</i>            |
| 8:35 AM  | <b>Optimizing Imaging for Strain</b><br><i>J. Gorcsan, M. Jankowski, M. Umland</i>     |
| 9:35 AM  | <b>Refreshment Break</b><br>Asbury Hall  |
| 10:05 AM | <b>Workshop: Review of Strain Cases</b><br><i>G. Aurigemma, J. Gorcsan, V. Sorrell</i> |
| 12:15 PM | <b>Lunch</b><br>Asbury Hall  |

### Learning Lab: 3D Workshop (Additional Fee Required)

Grand Harbor Ballroom South

|         |   |
|---------|---|
| 1:25 PM | <b>Introduction to 3D Learning Lab</b><br><i>M. Parker, L. Sugeng</i>                                     |
| 1:35 PM | <b>Cardiac Anatomy: Learning the Basics for 3D</b><br><i>L. Sugeng</i>                                    |
| 2:00 PM | <b>Basics of 3D TTE</b><br><i>M. Jankowski, L. Sugeng</i>   |
| 2:45 PM | <b>Refreshment Break</b><br>Asbury Hall   |
| 3:00 PM | <b>Valvular Quantification: The Impact of 3D for Valvular Morphology and Function</b><br><i>L. Sugeng</i> |
| 3:10 PM | <b>Hands-on Workshop</b><br><i>B. Gentile, K. Koulogiannis, M. Parker</i>                                 |
| 5:15 PM | <b>Adjourn</b>  |

## Sunday, October 13, 2019

### General Echocardiography

Moderator: *L. Gillam*

Grand Harbor Ballroom South

|          |   |
|----------|---|
| 7:00 AM  | <b>Registration, Breakfast, and Visit Exhibits</b><br>Asbury Rotunda and Asbury Hall                      |
| 7:45 AM  | <b>Welcome</b><br><i>G. Aurigemma</i>   |
| 7:50 AM  | <b>President's Address</b><br><i>M. Swaminathan</i>   |
| 8:00 AM  | <b>Comprehensive Left Heart Echo: 2019 Guidelines</b><br><i>M. Jankowski, M. Parker</i>                   |
| 8:25 AM  | <b>Comprehensive Right Heart Echo: 2019 Guidelines</b><br><i>L. Gillam, M. Umland</i>                     |
| 8:55 AM  | <b>Systolic Function: Back to Basics</b><br><i>G. Aurigemma</i>   |
| 9:20 AM  | <b>Basic Diastolic Physiology and Assessment</b><br><i>G. Aurigemma, M. Umland</i>                        |
| 10:00 AM | <b>Question and Answer</b>  |
| 10:20 AM | <b>Refreshment Break and Visit Exhibits</b><br>Asbury Hall  |
| 10:35 AM | <b>Strain Imaging: Myocardial Mechanics Simplified and Applied</b><br><i>J. Gorcsan</i>                   |
| 11:15 AM | <b>"I" Strain: How I Use Strain in Clinical Practice</b><br><i>J. Gorcsan, V. Sorrell</i>                 |
| 11:45 AM | <b>Where Contrast Administration Makes a Difference</b><br><i>L. Gillam</i>                               |
| 12:15 PM | <b>Lunch and Visit Exhibits</b><br>Asbury Hall  |
| 1:15 PM  | <b>How I Do a TEE: All the Views That are Fit to Print</b><br><i>L. Sugeng</i>                            |
| 1:45 PM  | <b>3D Echo: Acquisition, Cropping, and Display</b><br><i>L. Sugeng</i>                                    |
| 2:30 PM  | <b>Cases: Where 3D Really Made a Difference</b><br><i>L. Gillam, M. Parker, L. Sugeng, M. Swaminathan</i> |
| 3:00 PM  | <b>Question and Answer</b>  |
| 3:20 PM  | <b>Refreshment Break and Visit Exhibits</b><br>Asbury Hall  |
| 3:35 PM  | <b>Quantitating MR: A Piece of PISA and Other Treats</b><br><i>M. Parker, M. Umland</i>                   |
| 4:05 PM  | <b>"Can't We All Just COAPT?" Echo and the MitraClip</b><br><i>M. Parker, M. Saric</i>                    |
| 4:35 PM  | <b>Cardiac Magnetic Resonance and Regurgitation Quantitation: The Gold Standard?</b><br><i>A. Patel</i>   |
| 5:05 PM  | <b>Adjourn</b>  |



# Schedule of Events

## Monday, October 14, 2019

### Valvular Heart Disease Part I

Moderator: *M. Parker*

Grand Harbor Ballroom South

7:00 AM **Registration, Breakfast, and Visit Exhibits**  
Asbury Rotunda and Asbury Hall

7:45 AM **Basic and Advanced Assessment of Aortic Stenosis**  
*M. Saric*

8:20 AM **Paradoxical, Understandable Low Flow Aortic Stenosis: Use of Dobutamine**  
*L. Gillam*

8:50 AM **Assessing Prosthetic Valve Function: Differentiating Normal From Stenotic or Regurgitant**  
*M. Parker*

9:20 AM **Question and Answer**

9:35 AM **Refreshment Break and Visit Exhibits**  
Asbury Hall

### Valvular Heart Disease Part II

Moderator: *L. Sugeng*

Grand Harbor Ballroom South

9:50 AM **Self-expanding Indications for TAVR: Who Should Get It and Will It Last?**  
*M. Saric*

10:15 AM **“You See, What Happened Was....” Cases I Wish I Could Re-do**  
*G. Aurigemma, M. Parker, M. Saric*

10:50 AM **Question and Answer**

11:20 AM **Tricuspid Regurgitation: The Elephant in the Reading Room**  
*L. Sugeng*

11:45 AM **“Are These Scallops Fresh?” Interesting Mitral Valve Cases**  
*G. Aurigemma, L. Sugeng*

12:30 PM **Lunch and Visit Exhibits**  
Asbury Hall

1:30 PM **POCUS: The Genie is Out of the Bottle**  
*M. Saric, V. Sorrell*

2:15 PM **Congenital Heart Disease Part I: The Unrepaired Adult**  
*D. Defaria Yeh*

2:40 PM **Refreshment Break and Visit Exhibits**  
Asbury Hall

2:55 PM **Congenital Heart Disease Part II: The Repaired Adult**  
*D. Defaria Yeh*

3:20 PM **Rapid Fire Echo Quiz: Everyone Plays**  
*J. Gorcsan*

4:00 PM **Adjourn**

## Tuesday, October 15, 2019

### Clinical Echocardiography

Moderator: *G. Aurigemma*

Grand Harbor Ballroom South

7:00 AM **Registration, Breakfast, and Visit Exhibits**  
Asbury Rotunda and Asbury Hall

8:00 AM **Cardiac Magnetic Resonance in Myocardial Disease: Where it is Necessary for Patient Management**  
*A. Patel*

8:30 AM **Hypertrophic Cardiomyopathy and Phenocopies**  
*L. Gillam*

9:00 AM **Cases: Strain in Myocardial Disease**  
*J. Gorcsan*

9:30 AM **Challenging Cases in Diastolic Function Assessment**  
*G. Aurigemma*

10:00 AM **Question and Answer**

10:20 AM **Refreshment Break and Visit Exhibits**  
Asbury Hall

10:35 AM **Smoke, Sludge, and Tsuris: Imaging the Left Atrial Appendage**  
*B. Gentile*

10:55 AM **“The Cath Showed What?” Challenging Stress Echo Cases**  
*B. Gentile, M. Saric, V. Sorrell*

11:25 AM **Question and Answer**





# Exhibit Information



## Exhibit Location and Hours

Exhibits are located in the Asbury Hall during the dates and hours listed below.

Sunday, October 13, 2019 . . . . . 7:00 AM–3:35 PM

Monday, October 14, 2019 . . . . . 7:00 AM–2:55 PM

Tuesday, October 15, 2019 . . . . . 7:00 AM–2:55 PM

## Exhibitor Descriptions



**Bracco Diagnostics**  
 259 Prospect Plains Rd Bldg H  
 Monroe Township, NJ 08831  
 United States  
 Phone: 1-412-651-1778  
[lumason.com](http://lumason.com)



Bracco Diagnostics Inc. is a leader in innovative contrast imaging agents and offers a product and solution portfolio for all key diagnostic imaging modalities including ultrasound contrast, X-Ray Imaging, MRI, and Nuclear Medicine.



**Canon Medical Systems, USA**  
 2441 Michelle Drive  
 Tustin, CA 92780  
 United States  
 Phone: 1-310-619-7012  
[us.medical.canon/products/ultrasound/](http://us.medical.canon/products/ultrasound/)



Canon Medical is dedicated to assisting patients, our customers, and partners, with healthcare solutions that address their individual needs and concerns. This dedication comes from our management philosophy of “Made for Life.”



**DiagnosTemps**  
 5050 Quorum Drive, Suite 700  
 Dallas, TX 75254  
 United States  
 Phone: 1-866-934-3674  
[diagnostemps.com](http://diagnostemps.com)

DiagnosTemps is a specialized staffing agency that is committed to providing the highest quality of trusted, on-demand personnel solutions to hospitals, outpatient facilities, surgery centers and physician offices. Established in 1993, DiagnosTemps excels at meeting the temporary staffing needs of healthcare facilities throughout the United States.

|          |   |
|----------|---|
| 12:00 PM | <b>Lunch and Visit Exhibits</b><br>Asbury Hall  |
| 1:00 PM  | <b>Pericardial Cases That You Will Never Forget!</b><br><i>J. Gorcsan, K. Koulogiannis, A. Patel</i>                                  |
| 1:25 PM  | <b>Expert Consensus for Multimodality Imaging Evaluation of Adult Patients During and After Cancer Treatment</b><br><i>V. Sorrell</i> |
| 1:50 PM  | <b>2020 Vision: Deep Learning and Other Advances and Their Impact on Echo Practice</b><br><i>A. Patel, M. Saric, V. Sorrell</i>       |
| 2:15 PM  | <b>Multimodality Approach to Diseases of the Aorta</b><br><i>A. Patel</i>   |
| 2:40 PM  | <b>Refreshment Break and Visit Exhibits</b><br>Asbury Hall  |
| 2:55 PM  | <b>Guidelines for the Use of Echocardiography in the Evaluation of a Cardiac Source of Embolism</b><br><i>M. Saric</i>                |
| 3:20 PM  | <b>Left Atrial Appendage Closure Devices</b><br><i>B. Gentile</i>   |
| 3:40 PM  | <b>CSI Echo Lab: Unforgettable Cases</b><br><i>J. Gorcsan, M. Saric, L. Sugeng</i>  |
| 4:00 PM  | <b>Question and Answer</b>  |
| 4:30 PM  | <b>Adjourn</b>  |

# Exhibit Information



**GE Healthcare - Pharmaceutical Diagnostics**  
1000 Results Way  
Marlborough, MA 01752  
United States  
Phone: 1-636-675-0017  
[gehealthcare.com](http://gehealthcare.com)



GE Healthcare provides transformational medical technologies that will shape a new age of patient care. GE Healthcare's expertise in medical imaging and information technologies, medical diagnostics, patient monitoring systems, disease research, drug discovery and biopharmaceuticals is dedicated to detecting disease earlier and tailoring treatment for individual patients.



**Hitachi Healthcare**  
1959 Summit Commerce Park  
Twinsburg, OH 44087  
United States  
Phone: 1-800-800-3106  
[hitachihealthcare.com](http://hitachihealthcare.com)



Hitachi Healthcare is proud of the reputation we've built as an industry leader in diagnostic ultrasound. Known for unparalleled Doppler performance, superior system reliability and intuitive use of cutting edge technology, Hitachi Healthcare remains the ideal choice for exceptional diagnostic ultrasound imaging.



**Lantheus Medical Imaging, Inc.**  
331 Treble Cove Road  
North Billerica, MA 01862  
United States  
Phone: 1-800-362-2668  
[lantheus.com](http://lantheus.com)



Lantheus Medical Imaging is a global leader in the field of medical imaging. We develop, manufacture and commercialize essential diagnostic imaging agents and products that help healthcare professionals identify disease and improve patient treatment and care.

## PHILIPS

**Philips Healthcare**  
3000 Minuteman Road  
Andover, MA 01810  
United States  
Phone: 1-800-722-9377  
[usa.philips.com/healthcare](http://usa.philips.com/healthcare)



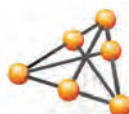
Philips is a leading health technology company focused on improving people's health and enabling better outcomes across the health continuum from healthy living and prevention, to diagnosis, treatment and home care. Philips leverages advanced technology and deep clinical and consumer insights to deliver integrated solutions. Headquartered in the Netherlands, the company is a leader in diagnostic imaging, image-guided therapy, patient monitoring and health informatics, as well as in consumer health and home care.



**Siemens Healthineers**  
40 Liberty Boulevard  
Malvern, PA 19355  
United States  
Phone: 1-888-826-9702  
[siemens-healthineers.com/en-us/](http://siemens-healthineers.com/en-us/)



Siemens Healthineers is committed to becoming the trusted partner of healthcare providers worldwide, enabling them to improve patient outcomes while reducing costs. Driven by our legacy of engineering excellence and our pioneering approach, we are a global leader in medical imaging, diagnostics, clinical IT, and services.



**ULTRALINQ**  
HEALTHCARE SOLUTIONS

**UltraLinq Healthcare Solutions, Inc.**  
27 Union Square West, Suite 204  
New York, NY 10006  
United States  
Phone: 1-800-227-2956  
[ultralinq.com](http://ultralinq.com)

UltraLinq is your secure, fast cardiovascular cloud PACS platform. Our cloud PACS platform is designed to provide secure, fast access and retrieval of patient reports. With multi-site access from any internet-connected device, reporting is streamlined and always accessible. Advanced image reporting tools and customizable worksheets provide optimised patient reporting.



**Wolters Kluwer**  
1203 Snug Harbor Drive  
Casselberry, FL 32707  
United States  
Phone: 1-407-312-9523  
[lww.com](http://lww.com)

Wolters Kluwer is the proud publisher of the Journals of the American Heart Association, including Circulation: Cardiovascular Imaging. We offer a full range of specialized books, journals and electronic media. Visit us today.

# Faculty Disclosures

**The following faculty members do not have any relationships with industry/commercial supporters to disclose:**

Gerard Aurigemma, MD, FASE  
Doreen Defaria Yeh, MD  
Konstantinos P. Koulogiannis, MD  
Matthew Parker, MD, FASE  
Vincent Sorrell, MD, FASE  
Madhav Swaminathan, MD, FASE  
Matt Umland, ACS, RDCS, FASE

**The following faculty members do have financial relationships with industry/commercial supporters to disclose:**

Bryon A. Gentile II, MD – Boston Scientific (Speaker/Speaker's Bureau)  
Linda D. Gillam, MD, MPH, FASE – Bracco (Research Grant Support, Including PI); Edwards Lifesciences (Consultant/Advisor)  
John Gorcsan III, MD, FASE – Medtronic (Research Grant Support, Including PI); Hitachi Aloka (Research Grant Support, including PI); GE (Research Grant Support, Including PI)  
Madeline Jankowski, BS, RDCS, FASE – Bay Labs Inc. (Consultant/Advisor)  
Amit R. Patel, MD – Astellas (Speaker/Speaker's Bureau); Alnylam (Speaker/Speaker's Bureau); General Electric (Research Grant Support (including PI))  
Lissa Sugeng, MD, MPH, FASE – Hitachi Medical (Speaker's Bureau, Equipment grant); Philips Healthcare (Adv. Board member); Siemens Healthcare (Speaker, Adv. Board member); Toshiba-Canon Medical (Speaker's Bureau, Research Grant Support (including PI))  
Muhamed Saric, MD, PhD – Philips (Speaker/Speaker's Bureau); Siemens (Consultant/Advisor); Medtronic (Speaker/Speaker's Bureau)

**The following members of the ASE CME Committee (not serving as faculty) do not have any relationships with industry/commercial supporters to disclose:**

Bhawna Arya, MD, FASE; Jennifer Betz, BS, RDCS, FASE; Mary Corretti, MD, FASE; Loren Francis, MD; Denise Ignatowski, BS, RDCS, FASE; Eric Kallstrom, MBA, ACS, RDCS, FASE; Jin Kyung Kim, MD, PhD, FASE, FACC; Rebecca Klug, BA, ACS, RDCS, PE, RT:R, FASE; Smadar Kort, MD, FASE; Aparna Kulkarni, MD; Maan Malahfji, MD; Matthew Parker, MD, FASE; Rene Quiroz, MD, FASE; Eileen Richardot, RCS, RDCS, FASE; Danita Sanborn, MD, MMSc, FASE; Jeffrey Scott, DO; Timothy Slesnick, MD, FASE; Richard Stacey, MD, FASE; Carolyn Lee Taylor, MD, FASE; Ratna Vadlamudi, MD, FASE; Anita Wokhlu, MD, FASE

**All members of the ASE staff who were involved in the planning and implementation of this activity do not have any relationships with industry/commercial supporters to disclose:**

Jenn Goss, Healthcare Education Specialist  
Kelly Joy, Meeting Planner  
Christina LaFuria, Director of Education  
Jaclyn Levine, CMP, Meetings Department Manager  
Robin Wiegerink, MNPL, Chief Executive Officer

# ECHO FLORIDA

# A N N U A L 8th

ASE would like to thank our  
Industry Roundtable Partners



**Canon**



**HITACHI**  
Inspire the Next



**PHILIPS**

**SIEMENS**  
Healthineers

**ULTRONICS**

## Connect with ASE

Join the conversation by using #EchoFlorida

 [Facebook.com/asecho](https://www.facebook.com/asecho)

 [@ASE360](https://twitter.com/ASE360)

 [The American Society of Echocardiography](https://www.linkedin.com/company/the-american-society-of-echocardiography)

 [@ASE360](https://www.instagram.com/ASE360)

 [Connect.asecho.org](https://www.connect.asecho.org)

 [Pinterest.com/ASE360](https://www.pinterest.com/ASE360)

 [ASE360](https://www.youtube.com/ASE360)



2530 Meridian Parkway  
Suite 450  
Durham, NC 27713 USA  
Phone: 1-919-861-5574  
Fax: 1-919-882-9900  
[ASEcho.org](https://www.ASEcho.org)