

# ECHO FLORIDA™

# 10<sup>th</sup> ANNUAL



## FINAL PROGRAM

**October 8 – 10, 2022**

*Disney's Yacht & Beach Club Resorts*

*Walt Disney World® Resort - Lake Buena Vista, FL*

### Course Director

Linda D. Gillam, MD, MPH, FASE

Past President, ASE

Morristown Medical Center

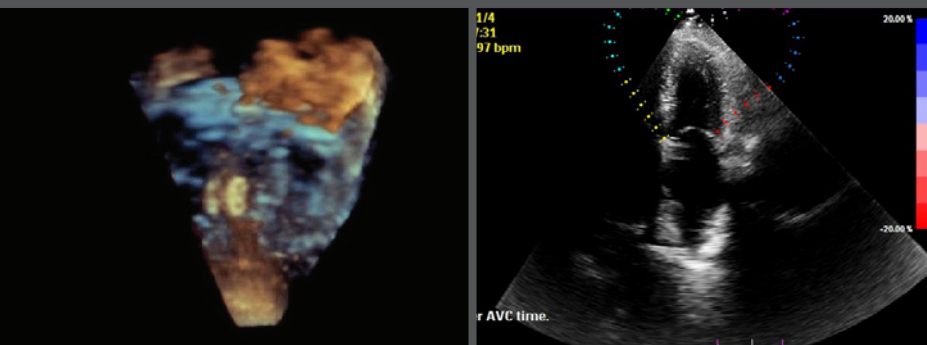
Morristown, NJ

### Course Co-Director

Matt Umland, ACS, RDCS, FASE

Aurora Health Care

Milwaukee, WI



# Welcome Message and Faculty

## Welcome Message

Welcome to our 10th Annual Echo Florida course, sponsored by ASE in co-operation with the Society of Cardiovascular Anesthesiology. Along with our expert faculty and the ASE team we hope to provide you with a comprehensive and entertaining review of echocardiography in contemporary clinical practice. The goal of Echo Florida is to introduce the newest applications of echocardiography while also emphasizing the application of basic and advanced echo in the daily practice of echocardiography in the echo lab, structural procedure rooms, cardiac operating rooms and critical care units.

Our major goal is that the presentations are relevant to the day-to-day practice of echocardiography. While we cover contemporary research in echocardiography, this is not what Echo Florida is primarily designed to highlight. Instead, we aim to give the audience insight into how the faculty uses echocardiography in clinical decision making. Case based sessions throughout the conference will complement the teaching points of the lecture-based presentations.

The faculty have been recruited not only because they are academic stars, but because they are superb clinicians, approachable people, and share a passion for teaching. They are all looking forward to this in-person meeting!

We have designed the sessions so that they are entertaining and interactive; to that end we will engage the audience by using the ASE Courses app to pose questions during the presentations and there will be multiple opportunities for Q and A. We will continue the tradition of having the faculty share cases that highlight their skill and expertise as well as those cases that provided teaching moments for them too.

**A brief review of the program:** Saturday, Sunday, and Monday will all include interactive presentations with a case-based flavor. Additionally, Saturday and Sunday afternoon will feature optional small group sessions with a focus on strain, hands-on TEE simulator training, 3D for sonographers and fascinating cases from the archives of CASE.

Saturday presentations cover the tools in the echo toolbox including 2D, Doppler, TEE, stress echo, 3D, and strain. Drs. Klein and Aurigemma will share their expertise on diastolic function. On Sunday we will switch to valvular heart disease and POCUS applications. There will be extensive discussion of the pathophysiology of all forms of valve disease as well as catheter and surgical approaches to treatment. Monday will round out the discussion of valvular disease with a focus on the role of cardiovascular CT and MRI and then transition to ultrasound enhancing agents, congenital heart disease, hypertrophic cardiomyopathies, HCM mimics including amyloid heart disease, ventricular assist devices and source of embolus. We will close with expert opinions on the future of echocardiography.

Welcome to Orlando, a great place for fun and entertainment. We hope that the passion of our faculty for clinical echocardiography is evident, and you enjoy Echo Florida.



Course Director  
**Linda D. Gillam, MD, MPH, FASE**  
Past President, ASE  
Morristown Medical Center  
Morristown, NJ



Course Co-Director  
**Matt Umland, ACS, RDCS, FASE**  
Aurora Health Care  
Milwaukee, WI

## Faculty

**Gerard Aurigemma, MD, FASE**  
UMass Memorial Medical Center  
Worcester, MA

**Yvette Carvallo, RDCS, RVS, FASE**  
Morristown Medical Center  
Morristown, NJ

**Doreen DeFaria Yeh, MD, FASE**  
Massachusetts General Hospital  
Boston, MA

**Kathryn Glas, MD, MBA, FASE**  
University of Arizona College of Medicine  
Phoenix, AZ

**Allan Klein, MD, FASE**  
Past President, ASE  
Cleveland Clinic  
Cleveland, OH

**Konstantinos Koulogiannis, MD**  
Morristown Medical Center  
Morristown, NJ

**Stephen Little, MD, FASE**  
President, ASE  
Houston Methodist Hospital  
Houston, TX

**Leo Marcoff, MD, FASE**  
Morristown Medical Center  
Morristown, NJ

**Amit Patel, MD**  
University of Virginia  
Charlottesville, VA

**Muhamed Saric, MD, PhD, FASE**  
New York University  
New York, NY

**Stanton Shernan, MD, FASE**  
Brigham and Women's Hospital  
Boston, MA

**Vincent Sorrell, MD, FASE**  
University of Kentucky  
Lexington, KY

**Lissa Sugeng, MD, MPH, FASE**  
Northwell Health  
Manhasset, NY

# Program Information

## Overview of Echo Florida

Echo Florida is a comprehensive review of cardiovascular ultrasound, including dedicated sessions on coronary artery disease (including stress testing), valvular heart disease, heart failure, emerging technologies, complex congenital heart disease and case-based demonstrations on the role of 2D, and real time 3D/4D echocardiography.

## Target Audience

This course is designed for adult and pediatric cardiologists, cardiovascular surgeons, cardiovascular anesthesiologists, cardiac radiologists, fellows in training, cardiovascular sonographers, cardiovascular nurse specialists, internists, intensivists, and emergency physicians with a special interest in clinical cardiology and echocardiography.

## Course Learning Objectives

Upon completion of these sessions, participants will be better able to:

1. Analyze and quantify systolic and diastolic function by echocardiography and understand the role of strain imaging.
2. Identify indications for echocardiographic contrast agents.
3. Describe the findings of echocardiography in various forms of infective endocarditis.
4. Quantify valvular regurgitation using PISA.
5. Describe the role of standard and advanced echo (3D echo, strain) in contemporary echocardiography.
6. Describe the selection process for patients with TAVR and the role of echocardiography in monitoring patients who have undergone TAVR.
7. Recognize and assess the role of echocardiography in deployment of percutaneous devices, such as appendage occlusion devices.
8. Describe echocardiographic features of common complex congenital lesions found in adults.
9. Explain normal and abnormal findings of prosthetic valve function.
10. Describe the complementary nature competing imaging technologies, such as MRI and CT.
11. Describe echocardiographic features of hypertrophic and infiltrative myopathies

## Workshops – Optional Small Group Sessions

Small group workshops offer registered participants the opportunity to get one-on-one time with faculty in a hands-on learning experience. Workshops are included with registration and in the total number of CME credits offered. Pre-registration is required for these workshops.



## Disclaimer

The information provided during this accredited CE activity is for continuing education purposes only and is not meant to substitute for the independent medical judgment of a healthcare provider relative to diagnostic and treatment options of a specific patient's condition.

## Accreditation and Designation

ASE is accredited by the Accreditation Council for Continuing Medical Education to provide continuing medical education for physicians. ASE designates this live activity for a maximum of **23 AMA PRA Category 1 Credits™**.

This activity contributes to the CME component of the **American Board of Anesthesiology's (ABA)** redesigned Maintenance of Certification in Anesthesiology™ (MOCA®) program, known as MOCA 2.0®. Please consult the ABA website, [www.theABA.org](http://www.theABA.org), for a list of all MOCA 2.0 requirements.

Successful completion of this CME activity, which includes participation in the evaluation component, enables the participant to earn up to 23 MOC points in the **American Board of Internal Medicine's (ABIM)** Maintenance of Certification (MOC) program and/or the **American Board of Pediatrics' (ABP)** Maintenance of Certification (MOC) program. It is ASE's responsibility to submit participant completion information to ACCME for the purpose of granting ABIM MOC or ABP MOC credit.

The **American Osteopathic Association (AOA)** automatically recognizes **AMA PRA Category 1 Credit™** as AOA Category 2 credit.

The ACCME and the **European Board of Accreditation in Cardiology (EBAC)** recognize each other's accreditation systems as substantially equivalent. To obtain EBAC credit for participation in this activity, submit evidence of participation directly to EBAC ([www.ebac-cme.org](http://www.ebac-cme.org)).

The **European Union of Medical Specialists (UEMS)-European Accreditation Council for Continuing Medical Education (EACCME)** has an agreement of mutual recognition of continuing medical education (CME) credit with the American Medical Association (AMA). European physicians interested in converting **AMA PRA Category 1 Credit™** into European CME credit (ECMEC) should contact the UEMS ([www.uems.eu](http://www.uems.eu)).

# Program Information

This activity is eligible for Section 1 credits in the **Royal College of Physicians and Surgeons of Canada's (RCPSC)** Maintenance of Certification (MOC) Program. Participants must log into MAINPORT to claim this activity.

**ARDMS, CCI, and Sonography Canada** recognize ASE's certificates and have agreed to honor the credit hours toward their registry requirements for sonographers.

This activity has been reviewed by the AAPA Review Panel and is compliant with **AAPA CME Criteria**. This activity is designated for 23 AAPA Category 1 CME credits. PAs should only claim credit commensurate with the extent of their participation. Approval is valid from 10/8/2022 to 10/10/2022. AAPA reference number: CME-207684.

Credits offered by ASE are considered echocardiography CME and thus in addition to meeting your other CME/MOC requirements they qualify as the CME credits required for **National Board of Echocardiography** certification/recertification and **Intersocietal Accreditation Commission (IAC)** Echocardiography Laboratory Accreditation.



*Maintenance of Certification in Anesthesiology Program® and MOCA® are registered certification marks of the American Board of Anesthesiology®. MOCA 2.0® is a trademark of the American Board of Anesthesiology®.*

## Daily Breakdown of CME/MOC Credits:

Saturday General Session = 6.75

Saturday Workshop = 0.75 per workshop

Sunday General Session = 7.25

Sunday Workshop = 0.75

Monday General Session = 7.25

Participants should claim only the credit commensurate with the extent of their participation in the activity. To claim all 23 credits/point you must attend two workshop sessions.

## Disclosure

ASE is committed to ensuring that its educational mission, and all accredited continuing educational programs provide a protected space to learn, teach, and engage in scientific discourse free from influence from organizations that may have an incentive to insert commercial bias into education.

While a monetary or professional affiliation with an ineligible company does not necessarily influence a speaker's presentation, the Standards for Integrity and Independence in Accredited Continuing Education and policies of the ACCME require that all financial relationships with ineligible companies be identified and mitigated prior to engaging in an accredited CE activity. In accordance with these policies, ASE actively identified relevant financial relationships between faculty in control of this accredited CE activity and ineligible companies and implemented mitigation strategies to eliminate any potential influence from persons or organizations that may have an incentive to insert commercial bias in this activity. Disclosure information is referenced and can be found on page 11 of this program.

## Commercial Support Disclosure Statement

**Educational Grants:** This accredited CE activity is supported in part by unrestricted educational grants from Bracco Diagnostics Inc., Edwards Lifesciences, Pfizer, and Medtronic, Inc.

**In-Kind Donations:** This accredited CE activity is supported in part by in-kind donations from Abbott, CAE Healthcare, and Edwards Lifesciences.

## How to Claim CME/MOC

The deadline to claim credits/points is **November 10, 2022**.

On October 10, 2022, you will receive an email containing the link to the CME/MOC Evaluation Form for Echo Florida (email subject will be "ASE Echo Florida CME/MOC Evaluation"). Firewalls and security features on your email account may block or direct these emails to your spam/junk folder. Please be sure to thoroughly check your email account. If you are not able to locate the email, please contact **CME@asecho.org**.

The evaluation will include the opportunity to provide your registry board information to allow us to submit your credits or points on your behalf. ASE submits credits/points to ABIM, ABA, ABP, ARDMS and CCI on behalf of the learner. Credits for Echo Florida will be sent to these boards on November 11, 2022. At this time, your CME/MOC Certificate will be uploaded to your ASE Learning Hub account. Instructions to accessing your ASE Learning Hub account will be included in the email.

# Attendee Information and Regulations

## Registration Location and Hours

The ASE Registration desk is located in the Newport Lobby, located in the Disney Yacht & Beach Club Resort Convention Center. The Registration desk will be staffed during the following hours:

Friday, October 7, 2022 . . . . . 4:00 PM – 7:00 PM  
Saturday, October 8, 2022. . . . . 6:45 AM – 5:30 PM  
Sunday, October 9, 2022. . . . . 6:30 AM – 4:45 PM  
Monday, October 10, 2022 . . . . . 6:30 AM – 3:30 PM

## Food Functions

ASE will provide breakfast, lunch, and coffee breaks for all registered attendees of the main conference Saturday–Tuesday in Newport East. Please refer to the program schedule beginning on page 7 for the times.

Disney's Yacht & Beach Club Resorts offers their guests a variety of dining options. Please see page 6 for more details.

## Internet Access

There is complimentary wireless internet available throughout Disney's Yacht & Beach Club Resorts. Attendees of this course also receive complimentary wireless internet in their guest rooms.

## Business Center

The Business Center is located in the Convention Center and is open daily. It offers fax, photo-copier, mail, and computer services.

## Safety

Audience seating is on a first-come, first-served basis. According to fire code, a session must be closed if the room fills to capacity. Inappropriate behavior or undesirable conduct, including, but not limited to, verbal or physical abuse, whether threatened or performed, will not be permitted or tolerated. You must wear your name badge at all times when attending the session or events.

## Photography/AV Policy

No person may record any portion of the ASE Echo Florida Course, either by video, still or digital photography, audio, or any other recording or reproduction mechanism. This includes recording of presentations and supporting audio visual materials. Taking photos of, or recording the content of, presentation slides is also prohibited and is considered intellectual piracy. Attendees who ignore this policy will be asked to leave the educational session and are at risk of losing their name badge and attendance privileges. Photographs taken for the purpose of sharing on social media are allowed, but should avoid showing presentation slides. Please use #EchoFlorida when posting on social media. ASE reserves the rights to all recordings or reproductions at ASE meetings. Please be aware that during the ASE Echo Florida Course, attendees, vendors, guests, and exhibitors may be photographed or videotaped by ASE staff capturing the event. Some of these photographs or videos may be displayed by ASE in future publications or other materials. By virtue of your attendance, you agree to allow ASE to use photographs of you in its promotional materials.



## MOBILE DEVICE USE

We encourage you to use your mobile device to download the ASE Courses app. After you have downloaded the app, you will have access to the entire meeting program at your fingertips. You can also use the app to ask questions during the sessions you attend. **Please remember to turn your mobile device to silent or vibrate mode.**

**Search “ASE Courses” in the Google Play and Apple Stores to download.**

# Location Information

## Disney's Yacht & Beach Club Resort

Delight in the formal grace of a grand New England-style yacht club at this lakeside hotel. Relax in the inviting elegance of a plush lobby replete with nautical touches, explore the whimsical Stormalong Bay, and rent a variety of watercraft from Bayside Marina. Sharing many amenities with its pastel-toned sister, Disney's Beach Club Resort, Disney's Yacht Club Resort is walking distance to Epcot® and a convenient boat ride to Disney's Hollywood Studios®.

Take the plunge at this beach-side water park area that offers three acres of aquatic fun for the whole family. Catch currents in an expansive sandbottomed pool. From atop the mast of a life-sized shipwreck replica, zip down a 230-foot-long water slide, one of the highest hotel slides at Walt Disney World Resort. Float down the lazy river on an inner tube, unwind in one of three whirlpool spas, or simply relax on the elevated tanning deck. There is also an array of other dazzling leisure activities like tennis, volleyball, fishing, and movie projections under the stars to name a few.

The Ship Shape Resort Fitness Center and Salon, features a full-service spa, salon, and fitness facility where you can keep up with your daily workout routine or surrender to pampering treatments like a massage or facial.

The championship golf courses at Walt Disney World Resort are just a short drive away! These courses have garnered praise and prestigious awards for their superlative design, impeccable service, world-class amenities, and overall playability throughout the years. When you play any of the four courses, you will discover the characteristic beauty and benefits that continue to rake in the accolades for Disney Golf.

## Make Time for the Magic!

As a Disney Resort Guest, you will enjoy special benefits that make your Walt Disney World® stay easier and more relaxing than ever. These benefits provide everything from extra time in the Theme Parks to convenient transportation.

Special ticket options are available for meeting attendees. You must purchase online at [MyDisneyGroup.com/EchoFL2022](https://www.mysdisneygroup.com/EchoFL2022) or call 407-939-4686 to receive these special Theme Park tickets. If you plan on visiting a Theme Park, please be aware that to enter a park both a park reservation and valid admission for the same park on the same date are required for all guests ages 3 and up. Plan your Walt Disney World vacation by setting up a My Disney Experience account. You can manage your Disney Resort

reservation, make your Theme Park reservations and, access Resort transportation routes all with the touch of your finger. Set up an account at [MyDisneyExperience.com](https://www.mysdisneygroup.com) and download mobile app from the Apple Store or Google Play.

## Disney's Yacht & Beach Club Resorts Dining Options

**Ale & Compass Restaurant:** Dine on New England comfort food and classic seafood dishes in a coastal-inspired restaurant that's reminiscent of a cozy lighthouse. Serving breakfast, lunch, and dinner.

**Beaches & Cream Soda Shop:** Bring your appetite to this retro soda fountain where the burger is king and every day is sundae. Offering lunch and dinner.

**Beach Club Marketplace:** Start your day with a breakfast sandwich or Mickey waffles. Then fuel up on lunch and dinner with a selection of macaroni and cheese dishes, hot or cold sandwiches, or refreshing salads. Open for breakfast, lunch, and dinner.

**Cape May Café:** Stop by this New England-inspired venue for buffet meals—including a bountiful breakfast or sensational surf and turf dinner. Serving breakfast, lunch, and dinner.

**Crew's Cup Lounge:** Race into port for a refreshing beverage at this cozy outpost nestled next to the Yachtsman Steakhouse. Unwind with a pint, a glass of wine or a cool cocktail or from a selection of tasty menu items. Available dinner and late night dining.

**Beach Club Marketplace:** Enjoy a hot, made-to-order meal and stock up on snacks before heading out for a day of fun in the parks. Available for breakfast, lunch, dinner, and late night dining.

**Hurricane Hanna's Waterside Bar and Grill:** Brace for frosty beverages and beautiful bay views at this not-so-blustery walk-up bar. Offering lunch and dinner service.

**Martha's Vineyard:** Canoodle over a Cape Cod or any signature cocktail from the full bar menu at this mellow New England beach house-inspired lounge. Imported wines and draft beers, including Sam Adams Seasonal, enhance the mood. Available for dinner and late night dining.

**The Market at Ale & Compass:** Find breakfast favorites like Mickey waffles with bacon, tasty sandwiches, and hot paninis at lunchtime and delightful coffee beverages to brighten your day. Offering breakfast, lunch, and dinner.

**Yachtsman Steakhouse:** Savor premium steaks, fresh seafood, and more at this family-friendly, New England-style steakhouse. Serving dinner.

Disney's Yacht & Beach Club Resorts is conveniently connected by water taxi, bus, or walking paths to numerous Disney restaurants within the Epcot Resort area.

# Schedule of Events

## Friday, October 7, 2022

4:00 –  
7:00 PM **Registration**  
Newport Lobby

## Saturday, October 8, 2022

6:45 AM **Registration, Breakfast, and Visit Exhibits**  
Newport Lobby and Newport East Ballroom

### The Basic Tools in the Toolbox

Newport West Ballroom

7:15 AM **Welcome and Logistics**  
*L. Gillam*

7:30 AM **Welcome from the ASE and SCA Presidents**  
*S. Little, K. Glas*

7:45 AM **“C’est LAVI!” Optimizing Left Sided Chamber Assessment**  
*G. Aurigemma*

8:10 AM **1D, 2D, 3D, 4D: How to Assess Left Ventricular Systolic Function**  
*V. Sorrell*

8:35 AM **Getting Your “Fill” Basic Diastolic Physiology and Assessment**  
*A. Klein*

9:00 AM **Strain Imaging: What, How, Why, and When**  
*G. Aurigemma*

9:25 AM **“I” Strain: How I Optimize Strain**  
*M. Umland*

9:40 AM **“Don’t Forget Me” Says the Right Heart!**  
*M. Saric*

10:05 AM **Question and Answer**

10:20 AM **Refreshment Break and Visit Exhibits**  
Newport East Ballroom

10:50 AM **Diastolic Function: Normal? Abnormal? I Don’t Know! How to Reconcile Conflicting Results**  
*G. Aurigemma, A. Klein*

11:15 AM **3D Echo Picture Perfect: Acquisition, Cropping, and Display**  
*S. Sherman*

11:40 AM **How I Do a TEE: Tricks of the Trade**  
*L. Sugeng*

12:05 PM **Question and Answer**

12:30 PM **Lunch and Visit Exhibits**  
Newport East Ballroom

## Science & Technology Theater

12:30 –  
1:30 PM **Transthyretin Amyloid Cardiomyopathy (ATTR-CM): Evaluating Clinical Findings to Support Earlier Diagnosis and Management**  
*Sponsored by: Pfizer*

Transthyretin amyloid cardiomyopathy (ATTR-CM) is a progressive disease that frequently presents as heart failure. ATTR-CM is underrecognized, with symptoms that can span multiple organ systems, resulting in delayed diagnosis and increased disease burden. This program provides an overview of ATTR-CM pathology and highlights the signs and symptoms that raise suspicion of ATTR-CM, as well as diagnostic approaches used to confirm suspicion. The program also presents clinical data supporting an oral treatment option for patients with this life-threatening disease

1:30 PM **3D for TTE: Practice Makes Perfect**  
*Y. Carvalho, M. Umland*

1:50 PM **3D Cases: Optimizing Acquisitions and Where 3D Makes a Difference**  
*K. Koulogiannis, L. Marcoff, V. Sorrell, L. Sugeng*

2:20 PM **Stress Echocardiography I: Coronary Artery Disease Treadmill, Bicycle, and Pharmacologic (Cases)**  
*V. Sorrell*

2:40 PM **Stress Echocardiography II: Non-Coronary Artery Disease Indications and How to**  
*K. Koulogiannis*

3:00 PM **Question and Answer**

3:30 PM **Refreshment Break, General Session Adjourn**  
Newport East Ballroom

## Workshops – Optional Small Group Sessions

3:45 –  
4:30 PM **Session 1**

**Breakout Room 1: TEE Simulation: How to Get Those Hard-to-Get Views**  
*K. Glas, K. Koulogiannis, L. Marcoff, S. Sherman, L. Sugeng*

**Breakout Room 2 Strain: How to Get it Right**  
*Y. Carvalho, M. Umland*

4:45 –  
5:30 PM **Session 2**

**Breakout Room 1: TEE Simulation: How to Get Those Hard-to-Get Views**  
*K. Glas, K. Koulogiannis, L. Marcoff, S. Sherman, L. Sugeng*

**Breakout Room 2 Strain: How to Get it Right**  
*Y. Carvalho, M. Umland*

5:30 PM **Adjourn**

# Schedule of Events

<b>Sunday, October 9, 2022</b>	
6:30 AM	<b>Breakfast and Visit Exhibits</b> Newport East Ballroom
<b>Doorways Through Your Heart: Valvular Heart Disease</b> Newport West Ballroom	
7:15 AM	<b>Saturday Round Up: Questions You Forgot to Ask</b> <i>L. Gillam</i>
7:30 AM	<b>Mitral Regurgitation: Primary, Secondary, and Proportionality – Core Concepts and Controversy</b> <i>L. Gillam</i>
8:00 AM	<b>Grading Mitral Regurgitation: It's Complicated</b> <i>L. Sugeng</i>
8:25 AM	<b>"The Half-time Show" Quantitation of Rheumatic and Calcific Mitral Stenosis</b> <i>K. Koulogiannis</i>
8:45 AM	<b>Options for Mitral Stenosis Treatment: Planning and Monitoring</b> <i>S. Sherman</i>
9:05 AM	<b>Goofs, Coups, and Mitral Cases I Will Never Forget</b> <i>L. Marcoff, M. Saric</i>
9:35 AM	<b>Hemodynamics in the Operating Room</b> <i>K. Glas</i>
10:05 AM	<b>Question and Answer</b>
10:25 AM	<b>Refreshment Break and Visit Exhibits</b> Newport East Ballroom
10:55 AM	<b>Aortic Stenosis: Are Holes More Important Than Flows? Core Concepts in Aortic Stenosis</b> <i>M. Saric</i>
11:20 AM	<b>How Echo Assesses Aortic Stenosis: Trying to Get it Right</b> <i>Y. Carvallo, M. Umland</i>
11:45 AM	<b>Dobutamine Stress Echo for Low Flow, Low Gradient Aortic Stenosis: When and How?</b> <i>A. Klein</i>
12:00 PM	<b>Aortic Regurgitation: Getting the Complete Picture – Why and How Much? Illustrative Cases</b> <i>L. Sugeng</i>
12:25 PM	<b>Question and Answer</b>
12:35 PM	<b>Lunch and Visit Exhibits</b> Newport East Ballroom
1:35 PM	<b>No Longer Forgotten: The Tricuspid and Pulmonic Valves</b> <i>D. DeFaria Yeh, L. Sugeng</i>
2:00 PM	<b>Prosthetic Valves: Not Quite Good as New</b> <i>L. Gillam</i>
2:20 PM	<b>Endocarditis: Multimodality Imaging</b> <i>L. Marcoff, A. Patel</i>

2:45 PM	<b>POCUS: Here Today and Here Tomorrow – Current Capabilities and the Cardiologist's Perspective</b> <i>V. Sorrell</i>
3:10 PM	<b>Critical Care and Perioperative Echocardiography; The Anesthesiologist's Perspective</b> <i>K. Glas</i>
3:30 PM	<b>Question and Answer</b>
3:50 PM	<b>Refreshment Break, General Session Adjourn</b> Newport East Ballroom

<b>Workshops – Optional Small Group Sessions</b>	
4:00 – 4:45 PM	<b>Session 1</b>
	<b>Breakout Room 1: TEE Simulation: How to Get Those Hard-to-Get Views</b> <i>K. Glas, K. Koulogiannis, L. Marcoff, S. Sherman, L. Sugeng</i>
	<b>Breakout Room 2: 3D for Sonographers: How to Acquire and Display Key Views (TTE and TEE)</b> <i>Y. Carvallo, M. Umland</i>
	<b>Breakout Room 3: Cases from CASE</b> <i>V. Sorrell</i>
4:45 PM	<b>Adjourn</b>

<b>Monday, October 10, 2022</b>	
6:30 AM	<b>Breakfast and Visit Exhibits</b> Newport East Ballroom
<b>Echocardiographic Potpourri</b> Newport West Ballroom	
7:15 AM	<b>Welcome and Summary: Questions That Kept You Awake</b> <i>L. Gillam</i>
7:30 AM	<b>Valvular Heart Disease: The Important Contributions of CT and MRI</b> <i>A. Patel</i>
7:55 AM	<b>I Can See Clearly Now – Cases Where Contrast Administration Makes a Difference</b> <i>Y. Carvallo, L. Gillam</i>
8:20 AM	<b>Congenital Heart Disease Part I: The Unrepaired Adult</b> <i>D. DeFaria Yeh</i>
8:50 AM	<b>Congenital Heart Disease Part II: The Repaired Adult</b> <i>D. DeFaria Yeh</i>
9:20 AM	<b>Pericardial Disease (Cases)</b> <i>A. Klein</i>
9:45 AM	<b>Question and Answer</b>
10:00 AM	<b>Refreshment Break and Visit Exhibits</b> Newport East Ballroom



# Exhibit Information

Exhibits are located in the Newport East Ballroom during the dates and hours listed below:

Saturday, October 8..... 6:45 AM – 1:30 PM

Sunday, October 9 ..... 6:30 AM – 1:35 PM

Monday, October 10 ..... 6:30 AM – 1:15 PM

## Exhibitor Descriptions



**Abbott**

ABBOTT- MITRACLIP



MitraClip therapy is a minimally invasive procedure approved for treating patients with clinically significant mitral regurgitation due to either (a) a deteriorated mitral valve but the patient is at very high risk for surgery, or (b) an improperly functioning mitral valve resulting from heart failure, with poor pumping of the blood by an enlarged heart, and who have reached maximal tolerance to medications.



Agitated Solutions, Inc  
2300 Myrtle Ave, Suite 200  
Saint Paul, MN 55114  
United States  
1-651-234-0886  
[AgitatedSolutions.com/orbis](http://AgitatedSolutions.com/orbis)

Agitated Solutions, Inc. is a company dedicated to providing tools to advance medical imaging. ASI develops the Orbis™ device, a novel, enhanced micro-bubble generator that is designed to improve bubble study efficiency and improve image quality.



10:25 AM	<b>Hypertrophic Cardiomyopathy and HCM Mimics: An Echo-MRI Collaboration: Echocardiography</b> <i>L. Gillam</i>
10:50 AM	<b>Hypertrophic Cardiomyopathy and HCM Mimics: An Echo-MRI Collaboration: MRI</b> <i>A. Patel</i>
11:10 AM	<b>Amyloid Heart Disease: A Multimodality Approach</b> <i>V. Sorrell</i>
11:30 AM	<b>Wow and Oh No! Structural Heart Cases I Will Never Forget</b> <i>L. Gillam, L. Marcoff</i>
12:15 PM	<b>Question and Answer</b>
12:30 PM	<b>Lunch and Visit Exhibits</b> Newport East Ballroom
1:15 PM	<b>Stump the Experts! What is This?</b> <i>G. Aurigemma, A. Klein, M. Saric, V. Sorrell</i>
1:40 PM	<b>They're Here, There, and Everywhere: Assist Devices: What You Need to Know</b> <i>M. Saric</i>
2:00 PM	<b>Source of Embolus: Rapid Fire Cases</b> <i>G. Aurigemma, L. Gillam</i>
2:30 PM	<b>What I See in My Crystal Ball: The Future of Echo – Artificial Intelligence and Beyond</b> <i>G. Aurigemma, L. Gillam, V. Sorrell, L. Sugeng</i>
3:00 PM	<b>Going, Going, Gone: Last Call for Questions</b> <i>All Faculty</i>
3:30 PM	<b>Adjourn</b>

# Exhibit Information



LIFE FROM INSIDE

**Bracco Diagnostics, Inc.**  
259 Prospects Plains Road, Bldg H  
Monroe Township, NJ 08831  
United States  
1-609-514-2200  
[braccoimaging.com/us-en](http://braccoimaging.com/us-en)



Bracco Imaging offers products and solutions for all key diagnostic imaging modalities: X-ray (including Computed Tomography, Interventional Radiology, and Cardiac Catheterization), Magnetic Resonance Imaging, Contrast Enhanced Ultrasound, and Nuclear Medicine through radioactive tracers. This portfolio is complimented by a range of medical devices and advanced administration systems.



**ChenMed**  
ChenMed  
1395 NW 167 Street  
Miami, FL 33169  
United States  
1-305-317-9340  
[ChenMed.com](http://ChenMed.com)

Our value-based, physician-led primary care honors seniors with affordable, VIP healthcare delivers better health. And we're transforming healthcare for the most vulnerable population: low-income seniors with multiple complex chronic diseases. Our model allows us to practice medicine the way it should be practiced.



**DiA Imaging Analysis**  
HaEnergia 77  
Beer Sheva, 84417  
Israel  
+972-777-648-318  
[DiA-Analysis.com](http://DiA-Analysis.com)

DiA Imaging Analysis empowers echo labs with AI. Our AI-based cardiac ultrasound analysis software LVivo Seamless™ runs behind-the-scenes, automatically selecting and analyzing the optimal apical views, then generating reproducible and accurate key measurements including Strain, EF and RV size and function on every echo exam. LVivo Seamless optimizes echo lab efficiency, saving valuable measurement time and maximizing Strain reimbursements.



**GE Healthcare**  
251 Locke Drive  
Marlborough, MA 01752  
United States  
1-508-573-8404  
[GEHealthcare.com](http://GEHealthcare.com)



As a leading global medical technology, pharmaceutical diagnostics, and digital solutions innovator, GE Healthcare enables clinicians to make faster, more informed decisions through intelligent devices, data analytics, applications and services, supported by its Edison intelligence platform. We are committed to fostering an inclusive culture of respect, transparency, and unyielding integrity.



**HeartLab**  
238 Khyber Pass Road  
Auckland, Akl 1023  
New Zealand  
1-628-257-9950  
[HeartLab.com](http://HeartLab.com)

HeartLab is bringing cardiology to the cloud with Pulse. A powerful PACS that accelerates the clinical workflow with accelerated load times, simple-to-use design, and image access from anywhere or any device.



**Lantheus  
Medical Imaging®**



**PHILIPS**

**Philips Healthcare**  
22100 Bothell Everett Hwy  
Bothell, WA 98021  
United States  
1-800-722-9377



Philips Healthcare is a world-class provide of healthcare products and services.



**Pfizer**  
245 E 42nd Street  
New York, New York 10017  
United States  
1-201-725-5790  
[Pfizer.com](http://Pfizer.com)



# Faculty Disclosures



**Ultronics**  
539 W. Commerce St #1679  
Dallas, TX 75208  
United States  
1-720-284-4285  
Ultronics.com



Ultronics' AI-powered platform, EchoGo, is revolutionizing echocardiography. Proven to predict patient outcomes, this groundbreaking solution automates complex analysis through a secure cloud connection. With unprecedented accuracy and zero variability, Ultronics empowers providers with superior heart disease detection and risk stratification.



**VentriPoint Diagnostics Ltd**  
2 Sheppard Avenue East  
Toronto, Ontario M2N 5Y7  
Canada  
1-416-848-4156  
Ventripoint.com

Ventripoint Diagnostics Ltd is primarily engaged in the development of cardiac diagnostic tools. VMS+ marries the ingenuity of the cardiac MRI and Echo with Ventripoint's KBR technology. KBR enables construction of a 3D model of the heart calculating volumes and ejection fractions for all chambers with accuracy comparable to MRI.



**Visura Technologies**  
8400 Normandale Lakes Blvd  
Bloomington, MN 55437  
United States  
1-612-812-7477  
VisuraTechnologies.com

Founded in 2015, Visura is a medical device company dedicated to delivering state-of-art visualization solutions to improve the safety and success of TEE probe intubation. They have developed the TEECAD System, the world's first, FDA-cleared, disposable camera that seamlessly connects to a TEE probe, providing physicians real-time visualization for more efficient and effective probe placement to support safer intubation.

**The following faculty members do not have any relationships with industry/commercial supporters to disclose:**

Doreen DeFaria Yeh, MD, FASE, FACC, FAHA  
Kathryn Glas, MD, MBA, FASE  
Stephen H. Little, MD, FASE  
Leo Marcoff, MD, FASE  
Vincent L. Sorrell, MD, FASE, FACP ASIM, FACC, FCMR  
Matt Umland, ACS, RDCS, FASE

**The following faculty members do have financial relationships with industry/commercial supporters to disclose:**

Gerard P. Aurigemma MD, FASE, FACC, FAHA; TomTec (Speaker/Speaker's Bureau)  
Yvette Carvallo, RDCS, RVS, FASE; Bracco Diagnostics (Speaker/Speaker's Bureau); Lantheus Medical Imaging (Speaker/Speaker's Bureau)  
Linda Gillam, MD MPH FASE; Bracco Imaging, Philips, Medtronic (Consultant or Advisor); Abbott, Edwards Lifesciences, Medtronic (Research Support/Funding)  
Allan Klein, MD, FASE; Pfizer, Sobi Pharma (Consultant/Advisor); Kiniksa (Research Support/Funding); Elsevier, Wolters Kluwer (Royalties)  
Konstantinos Koulogiannis, MD; Abbott, Edwards Lifesciences, Medtronic (Consultant/Advisor); 4C Medical Technologies (Stockholder)  
Amit Patel, MD; GE, Circle CVI, Siemens, Arterys (Research Support/Funding)  
Muhamed Saric, MD, PhD; Abbott, Boston Scientific, Medtronic (Speaker/Speaker's Bureau); Siemens Healthineers (Consultant/Advisor)  
Stanton K. Shernan, MD, FAHA, FASE; E-echocardiography, Philips (Other)  
Lissa Sugeng, MD, MPH, FASE; Siemens Healthineers (Speaker/Speaker's Bureau, Research Support/Funding); Philips (Speaker/Speaker's Bureau, Consultant/Advisor)

**The following members of the ASE CME Committee (not serving as faculty) do not have any relationships with industry/commercial supporters to disclose:**

Mary Corretti, MD, FASE – Chair  
Bruce Landeck, II, MD, FASE – Co-Chair  
Kelly Boegel, ACS, RCCS, RCS, FASE – Member at Large  
Michael Boisen, MD, FASE – Member at Large  
Mahesh Chandrasekhar, MD – Rising Star Representative  
Kristie Faust-Gomez, BS, ACS, RDCS, RVT, RT(R), FASE – Member at Large  
Loren Francis, MD, FASE – Perioperative Representative  
Ihab Hamzeh, MD, FASE – Member at Large  
Carlton Hartwell, ACS, RDCS, FASE – Member at Large  
Jiapeng Huang, MD, PhD, FASA, FASE – Member at Large  
James Iwaz, MD, FASE – Member at Large  
Eric Kallstrom, MBA, ACS, FASE, FAIUM, FACC – Sonographer Representative  
Michelle Klein-Neville, BS, ACS, RDCS, FASE – Member at Large  
Michael Lanspa, MD, FASE – Critical Care Representative  
Elizabeth Le, MD, FASE – Member at Large  
Peace Madueme, MD, MS, FASE – Pediatric Representative  
Laura Mercer-Rosa, MD, MSCE, FASE – Member at Large  
Mohamed Morsy, MD, FASE – Vascular Representative  
Ambika Nayar, MD, FASE – Member at Large  
Roosha Parikh, MD, FASE – Member at Large  
Tracy Ralston, RDCS, FASE – Member at Large  
Nidhish Tiwari, MD, FASE, FACC, FACP – Member at Large

**All members of the ASE staff who were involved in the planning and implementation of this activity do not have any relationships with industry/commercial supporters to disclose:**

Alysha Cieniewicz, Online Education Manager  
Kelly Joy, CMM, PMED, Healthcare CME Manager  
Christina LaFuria, Vice President of Educational Activities  
Jaclyn Levine, CMP, Senior Director of Meetings  
Robin Wiegerink, MNPL, Chief Executive Officer

# ECHO FLORIDA™

# 10th ANNUAL

ASE would like to thank our  
Industry Roundtable Partners.



## Connect with ASE

Join the conversation by using #EchoFlorida

 [Facebook.com/asecho](https://www.facebook.com/asecho)

 [@ASE360](https://twitter.com/ASE360)

 [The American Society of Echocardiography](https://www.linkedin.com/company/the-american-society-of-echocardiography)

 [@ASE360](https://www.instagram.com/ASE360)

 [Connect.asecho.org](https://connect.asecho.org)

 [ASE360](https://www.youtube.com/ASE360)

[#EchoFlorida](https://twitter.com/ASE360)



2530 Meridian Parkway

Suite 450

Durham, NC 27713 USA

Phone: 1-919-861-5574

Fax: 1-919-882-9900

[ASEcho.org](https://www.asecho.org)