



PHILIPS

Ultrasound

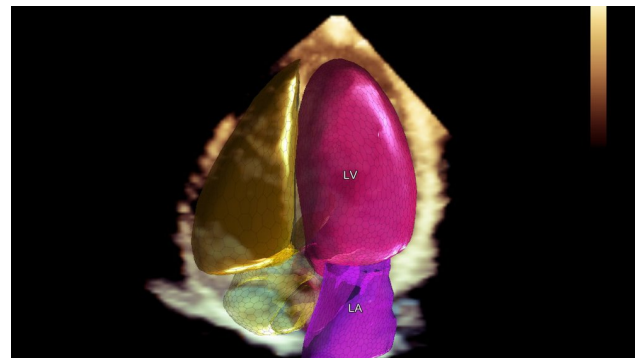
Clinical importance of volume measurements

Strategies for integrating your chamber quantification protocols using HeartModel^{AI}.

Studies show that changes in the volume of the left atrium can be an early indicator of heart failure – but it's a complex measurement that is typically not utilized. Join us for an evening of discussion and hands-on learning to understand the value and importance of including LA volume as part of your protocol for chamber quantification with **Muhamed Saric, MD, PhD, FACC, FASE** of NYU Langone Medical Center.

Plus, see a preview of Philips HeartModel^{AI}, a new Anatomically Intelligent Ultrasound (AIUS) tool that brings advanced quantification, automated 3D views and robust reproducibility to cardiac ultrasound imaging in less time than traditional 2D exams.

To register, email nicole.rutledge@philips.com. Modest refreshments will be served.



Tuesday, December 15

6:00 p.m

DoubleTree by Hilton Hotel Metropolitan
569 Lexington Ave, New York, NY