

Georgia
Chapter



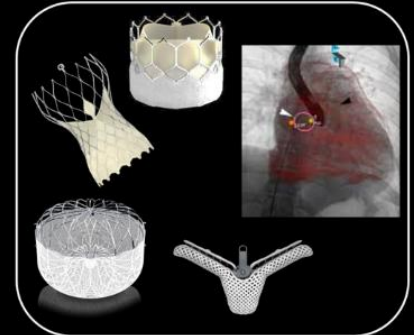
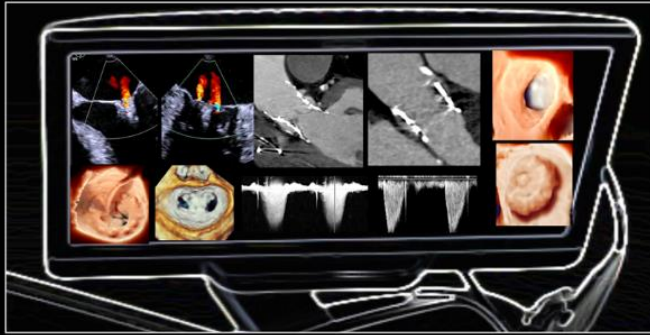
New York
Chapter



Mount
Sinai



Echo New York 2022 • October 22 and 23



Mount Sinai St. Luke's Hospital **Muhlenberg Auditorium**
421 West 113th Street, P4 New York, NY 10025

◆◆◆◆
40 Teaching Cases
Limited space
Register early
14.75 CMEs
◆◆◆◆

Program Directors

Edgar Argulian MD, FACC, FASE
Jagat Narula DM, PhD, MACC, FAHA, FRCP (Edin)
Mani A. Vannan MBBS, FACC, FAHA, FASE
David H. Adams MD, FACC



Preliminary Agenda

Speakers To Be Confirmed, Topics Subject to Change

*** Indicates Remote Live or Recorded Presentation**

October 22, 2022

7:00 a.m. **Registration, Continental Breakfast at The Muhlenberg Auditorium**

8:00 a.m. **Welcome, Introduction, Course Overview**
Jagat Narula MD, Edgar Argulian MD and Mani A. Vannan MBBS

8:10 a.m. – 10:15 a.m. **The Aortic Valve and The Root**
Moderator: Nadira Hamid MD, Minneapolis, USA

8:10 a.m. **Case 1 – Morphological Imaging of BAV***
(2D Echo vs 3D Echo vs CT)
Kikuko Obase MD, Japan

8:15 a.m. Questions and Discussion

8:18 a.m. **Case 2 – Aortic Dilatation in BAV**
(Patterns, Progression, and Follow-up)
Stamatios Lerakis MD, New York, USA

8:33 a.m. Questions and Discussion

8:36 a.m. **Case 3 – Aorta Measurements***
(Echo vs CT, CMR, Optimal vs Practical Method)
Swaminatha Gurudevan MD, New York, USA

8:51 a.m. Questions and Discussion

- 8:54 a.m. **Case 4 – Severity of AR: What Do I Do? ***
(Echo and CMR, Integrated Assessment)
Mark Hamilton MRCP, FRCR, London, The UK
- 9:09 a.m. Questions and Discussion
-
- 9:12 a.m. **Case 5 – Valve-Sparing Root Surgery for Pure AR ***
(Surgical Principles and Approaches)
Ismail El-Hamamsy MD, New York, USA
- 9:27 a.m. Questions and Discussion
-
- 9:30 a.m. **Case 6 - TAVR for BAV AS**
(Essentials of CT-Based Planning)
Lakshmi Prasad Dasi PhD, Atlanta, USA
- 9:45 a.m. Questions and Discussion
-
- 9:48 a.m. **Case 7 – TAVR for Pure AR (not BAV)**
(Echo and CT-Based Planning)
Nadira Hamid MD, New York, USA
- 10:03 a.m. Questions and Discussion
-
- 10:06 a.m. **Session Wrap-Up and Questions and Discussion**
(*Systematic Echo Approach, Measuring the Aortic Root, Reporting BAV, When to Do CMR/CT, 4D CMR Flow, Imaging-based Planning, What Does the Surgeon Want to Know?*)
Nadira Hamid MD, Presenters, and All

10:15 a.m. **Coffee Break and Visit Exhibits**

10:45 a.m. – 12:50 p.m. **Stress Testing, and The Right Heart**

Moderator: Mani A. Vannan MBBS, Atlanta, USA

10:45 a.m. **Case 8 – Dyspnea: ? Pulmonary Hypertension ***

(Exercise Testing: What, How and Interpretation)

Eduardo Bossone MD, Naples, Italy

11:00 a.m. Questions and Discussion

11:03 a.m. **Case 9 – Dyspnea: ? Diastolic HF ***

(Exercise Testing: What, How and Interpretation)

Geu-Ru Hong MD, Seoul, Korea

11:18 a.m. Questions and Discussion

11:21 a.m. **Case 10 – Dyspnea: “Moderate” MR**

(Exercise Testing: What, How and Interpretation)

Smadar Kort MD, Stony Brook, New York, USA

11:36 a.m. Questions and Discussion

11:39 a.m. **Case 11 – “Moderate” AS ***

(Newer insights, Clinical Outcomes)

Jeroen Bax MD, Leiden, The Netherlands

11:58 a.m. Questions and Discussion

12:03 p.m. **Case 12 – RV PA Coupling and Decoupling ***

(What, How and Why?)

Guillaume Leurent MD. Rennes, France

12:18 p.m. Questions and Discussion

12:21 p.m.

Case 13 – RV Size and Function in Chronic TR*

(2D/3D Echo, CMR)

Victoria Delgado MD, Barcelona, Spain

12:37 p.m.

Questions and Discussion

12:40 p.m.

Session Wrap-Up and Questions and Discussion

(Alternatives to Bicycle Exercise, Feasibility of 3D TEE of the RV, Is There One Optimal Index of RV Function? RVFWS vs RV Septal Strain, How to Estimate PASP/PulHTN in Low Velocity TR)

Mani A, Vannan MBBS, Presenters, and All

12:50 p.m.

Lunch Break and Visit Exhibits

1:50 p.m. – 4:14 p.m.

The Left Atrium and The Left Atrial Appendage

Moderator: Stamatios Lerakis MD, New York, USA

1:50 p.m.

Case 14 – LA Strain for LVFP

(Conventional Indices in Context and Reporting)

Otto Smiseth MD, Oslo, Norway

2:05 p.m.

Questions and Discussion

2:08 p.m.

Case 15 – LA Strain in AF*

(Predicting Occurrence and Recurrence)

Anne Bjerg Nielsen MB, Copenhagen, Denmark

2:23 p.m.

Questions and Discussion

2:26 p.m. **Case 16 – LA Strain to Predict Stroke ***
(Role in ESUS)
Thomas Marwick MD, Melbourne, Australia

2:41 p.m. Questions and Discussion

2:44 p.m. **Case 17 – LA Myopathy/Stiff LA**
(What, How and Why?)
Grace Lin MD, Rochester, USA

2:59 p.m. Questions and Discussion

3:02 p.m. **Case 18 – LAA Measurements**
(2D/3D TEE, 3D ICE vs CT)
Vikram Agarwal MD, New York, USA

3:17 p.m. Questions and Discussion

3:20 p.m. **Case 19 – LAA SEC/Sludge/Clot**
(Echo vs CT)
Muhammed Saric MD, New York, USA

3:35 p.m. Questions and Discussion

3:38 p.m. **Case 20 – LAA Device Closure**
(ICE Guided)
Sandeep Goyal MD, Atlanta, USA

3:53 p.m. Questions and Discussion

3:56 p.m.

Case 21 – LAA Device Closure Complication
(2D/3D TEE vs CT)

Vikram Agarwal MD, New York, USA

4:11 p.m.

Questions and Discussion

4:14 p.m.

Coffee Break and Visit Exhibits

4:30 p.m. – 6:30 p.m.

How and What to? Workshop
(Live Demonstrations Using Case Studies)

Moderators: Edgar Argulian MD, Mani A. Vannan MBBS

4:30 p.m.

Left Ventricular Strain, Ultrasound Enhancing Agents

*Kayla Lambert RDCS, Erica Pearson RDCS and
Mani A. Vannan MBBS*

5:10 p.m.

Pearls in AS and MR

*Kevin Moreau RDCS, Jaime Calero RDCS and
Edgar Argulian MD*

5:50 p.m.

Pearls in Imaging Assessment of The TV and TR

Nadira Hamid MD and Joao Cavalcante MD

6:30 p.m.

Adjourn

October 23, 2022

7:15 a.m.

**Continental Breakfast, Muhlenberg Auditorium, and
Special Breakfast Session:**

Why Should You Consider Using UEAs Beyond Salvage of
Suboptimal Echocardiograms? The Imperative for 2023!
Only The Truth, No BS.

Mani A. Vannan MBBS

8:15 a.m. – 10:45 a.m.

Mitral, Tricuspid and Aortic Valve Disease

Moderator: Rebecca Hahn MD, New York, USA

8:15 a.m.

Case 22 – Mitral Annular Disjunction *

(2D Echo vs 3D Echo vs CT/CMR)

Konstantinos Papadopoulos MD, Thessaloniki, Greece

8:30 a.m.

Questions and Discussion

8:33 a.m.

Case 23 – MAC Mitral Valve Disease

(Types, Imaging, Gradients, Valve Area and Outcomes)

Joao Cavalcante MD, Minneapolis, USA

8:48 a.m.

Questions and Discussion

8:51 a.m.

Case 24 – Grading Severity of MR

(Echo/CMR/CT: EROA, Regurgitant Volume, AROA)

Edgar Argulian MD, New York, USA

9:06 a.m.

Questions and Discussion

9:09 a.m.

Case 25 – TV Imaging for TEER

(Key Anatomical Features, Echo, CT)

Nadira Hamid MD, Minneapolis, USA

9:24 a.m.

Questions and Discussion

9:27 a.m.

Case 26 – ICE Guided TEER for MR *

(Case Selection, Outcomes)

Carlos Sanchez MD, Columbus, OH, USA

9:42 a.m.

Questions and Discussion

9:45 a.m.

Case 27 – ICE Guided TEER for TR

(Complement TEE or Replace TEE?)

Rebecca Hahn MD, New York, USA

10:00 a.m.

Questions and Discussion

10:03 a.m.

Case 28 – Elevated Gradient Post TAVR

(HALT, HAM and Clinical Outcomes)

Swaminatha Gurudevan MD, New York, USA

10:18 a.m.

Questions and Discussion

10:21 a.m.

Case 29 – Root Complications Post-TAVR

(Prediction, Outcomes)

Taylor Sirset MS, Columbus, OH, USA

10:36 a.m.

Questions and Discussion

10:39 a.m. **Session Wrap-Up and Questions and Discussion**
*(Respiratory Variation in TR CFD Severity, Reliability/Practicality
of Echo-Based RV/RF, ICE- Who Does What? Stress Testing in
MAC “MS”)*

Rebecca Hahn MD, Presenters, and All

10:45 a.m. **Coffee Break and Visit Exhibits**

11:15 a.m. – 12:30 p.m. **The Cardiomyopathies**

Moderator: Joao Cavalcante MD, Minneapolis, USA

11:15 a.m. **Case 30 – hATTR Amyloid**
(Diagnosis, Disease Activity/Burden, Prognosis)
Krishna Patel MD, New York, USA

11:30 a.m. Questions and Discussion

11:33 a.m. **Case 31 – AL Amyloid**
(Diagnosis, Disease Activity/Remission Prognosis)
Grace Lin MD, Rochester, USA

11:48 a.m. Questions and Discussion

11:51 p.m. **Case 32 – Fabry’s Disease**
(Diagnosis, Imaging/Biomarkers, Outcome)
Konstantina Mitrousi MD, Thessaloniki, Greece

12:06 p.m. Questions and Discussion

12:09 p.m. **Case 33 – Stress CMP***
(Happy Heart and Broken Heart Syndromes)
Elmir Omerovic MD, Goteborg, Sweden

12:24 p.m. Questions and Discussion

12:30 p.m. **Lunch Break and Visit Exhibits**

1:30 p.m. – 4:40 p.m. **The Cardiomyopathies, and Pericardial Disease**
Moderator: Edgar Argulian MD, New York, USA

1:30 p.m. **Case 34 – HCM**
(ETOH Ablation vs Mavacamten)
Bette Kim MD, New York, USA

1:45 p.m. Questions and Discussion

1:48 p.m. **Case 35 – HCM**
(Myectomy)
Paul Stelzer MD, New York, USA

2:03 p.m. Questions and Discussion

2:06 p.m. **Case 36 – Sarcoid**
(Disease Diagnosis and Activity)
Krishna Patel MD, New York, USA

2:21 p.m. Questions and Discussion

2:24 p.m. **Case 37 – Arrhythmic LV Dysplasia**
(Physiological or Pathological?)
Ozge Ozden MD, Istanbul, Turkey

2:39 p.m. Questions and Discussion

2:42 p.m. **Case 38 – Immune Checkpoint Inhibitor Myocarditis**
(Risk, Detection, Prognosis)
Jennifer Liu New York, USA

2:57 p.m. Questions and Discussion

3:00 p.m. **Case 39 – LVAD Complication**
(Echo/CT for Diagnosis, Management and Outcome)
Anelechi Anyanwu MD, New York, USA

3:15 p.m. Questions and Discussion

3:18 p.m. **Case 40 – Constrictive Pericarditis**
(Echo/CT/CMR for Diagnosis, Prognosis)
Edgar Argulian MD, New York, USA

3:33 p.m. Questions and Discussion

3:36 p.m. **Case 41 – Pericardial Effusive-Constriction**
(Diagnosis and Outcome)
Carlos Astudillo MD, Valparaiso, Chile

3:51 p.m. Questions and Discussion

3:54 p.m.

Case 42 – Recurrent Pericarditis

(Diagnosis, Imaging/Biomarkers, Outcome, Novel Therapies)

Michael S. Garshick MD, New York, USA

4:09 p.m.

Questions and Discussion

4:12 p.m.

Case 43 – Mystery Case!

(Diagnosis, Outcome)

Carlos Astudillo MD, Valparaiso, Chile

4:27 p.m.

Questions and Discussion

4:30 p.m.

Session Wrap-Up and Questions and Discussion

(Multi-modality Imaging in CMP, Disease Detection, Extent, Activity and Regression)

Edgar Argulian MD, Presenters, and All

4:40 p.m.

Adjourn