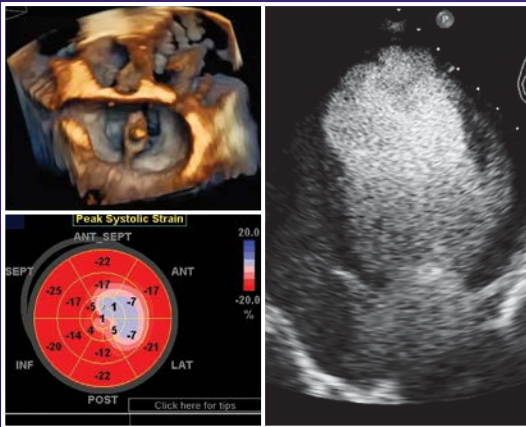


ECHO

NORTHWESTERN 2016 38th ANNUAL PROGRAM

Echo Innovations To Meet Today's Clinical Challenges

INCLUDING: 3D, Diastology, Interventional Echo, Contrast, Stress,
Congenital, Valvular Heart Disease



**Saturday - Monday
September 17-19, 2016**

**Northwestern Memorial
Hospital
Chicago, Illinois**

Sponsored by

Northwestern Medicine Feinberg School of Medicine

Echo Northwestern 2016 is held in cooperation with the
American Society of Echocardiography

Northwestern Medicine[®]
Feinberg School of Medicine



Earn up to 10 points towards the American Board of Internal Medicine (ABIM)
Maintenance of Certification (MOC).

This product (service) is not affiliated with or endorsed by Inteleos[™].
ARDMS[®] is a Council of Inteleos, Inc.

General Information

PROGRAM OBJECTIVES

This course will provide physicians and sonographers at all levels with practical knowledge and application of color flow Doppler, two-dimensional, transesophageal, 3D and stress echocardiographic techniques which can be utilized in everyday application as well as future applications of echocardiography. At the end of the course, each participant should have improved skills in the use of echocardiography techniques for the appropriate diagnosis and treatment of common cardiac conditions.

At the conclusion of this activity, participants will be able to:

1. Apply the recommendations for the echocardiographic evaluation of left ventricular function to their clinical practice.
2. Explain the role of echo in the treatment of heart failure.
3. Use strain imaging to assess cardiac function in various pathological states
4. Explore the extensive role of echo for the evaluation of diastolic function.
5. Assess patients with valvular disorders using the ACC/AHA guidelines for valvular heart disease
6. Recognize different echocardiographic methods of assessment of Right Ventricular structure and function. Cite the strengths and weaknesses of these techniques including complementary technologies: CT and MRI.
7. Discuss the clinical classification of pulmonary hypertension, its implications for the patient and how echo can help in assessing its severity and guide management of patients with the condition.
8. Evaluate how 3D echo works and express limitations and potential applications as it relates to daily practice and patient management.
9. Assess the latest data on contrast safety and use contrast safely by knowing which patients need to be monitored after contrast and how to monitor those patients.
10. Review of varying disease states that can be evaluated with stress echo.
11. Evaluate the role of echo in the diagnosis and treatment of patients with aortic stenosis.
12. Recognize the pathology and the basics of echocardiographic assessment of patients with congenital tricuspid valve disease
13. Review the role of echo in surgical and percutaneous treatments of aortic stenosis and mitral regurgitation
14. Review the role of echo in new percutaneous treatment of tricuspid regurgitation.

PROGRAM DESCRIPTION

Principles of echocardiography will be reviewed and advances will be demonstrated through lectures and case studies. Participants will be exposed to all aspects of basic and advanced echocardiography.

Daily sessions will be devoted to state of the art lectures on advances in echocardiography and specific application to the following states:

- Heart Failure
- Interventional Cardiology
- Valvular Heart Disease
- Coronary Artery Disease
- Congenital Heart Disease
- Strain Imaging

The following aspects of echocardiography will be covered:

- 2D Echocardiography
- Spectral and Color Doppler
- Transesophageal Echocardiography
- 3D Echocardiography
- Stress Echocardiography
- Contrast Echocardiography
- Tissue Doppler, Strain/Strain Rate
- Congenital Heart Disease (Disorders of the tricuspid valve)

Case studies will be interspersed throughout each of the lectures to emphasize the importance and clinical utility of each technique

discussed. The case studies will emphasize different topics in echocardiography that are seen in daily practice.

Clinical Cases in Echocardiography: Focus on Congenital Heart Disease.

Approved by both ABIM and ABP towards part II MOC requirements, this activity will provide cases reviewing the role of echocardiography in diagnosis and follow-up of a wide variety of different congenital heart diseases and defects, including, but not limited to: valve defects, atrial and ventricular septal defects, patent foramen ovale, patent ductus arteriosus, coarctation of the aorta, Ebstein's anomaly, pulmonary artery stenosis, Tetralogy of Fallot, transposition of the great arteries, etc. Cases will include symptomatic and asymptomatic diagnosis and treatment, as well as adult patients with repaired or palliated CHD.

TARGET AUDIENCE/PREREQUISITES

The target audience is cardiologists, cardiology fellows, anesthesiologists, surgeons, sonographers and nurses who have a need for echo expertise. A minimum of three months experience in echocardiography and knowledge of basic transesophageal anatomy and physiology of the heart is required.

CONFERENCE LOCATION

The program will be held at the 3rd floor Conference Center located in the Feinberg Pavilion of Northwestern Memorial Hospital, 251 E. Huron Street, Chicago, Illinois. Directions and parking information are available at www.nm.org. Discounted parking is available at the Huron-St. Clair garage, located at 222 E. Huron Street or at the Erie-Ontario garage, located at 321 E. Erie Street. Please see the registration table for parking validation.

ACCREDITATION

The Northwestern University Feinberg School of Medicine is accredited by the Accreditation Council for Continuing Medical Education to provide continuing medical education for physicians.

DESIGNATION

The Northwestern University Feinberg School of Medicine designates this live activity for a maximum of 23.25 *AMA PRA Category 1 Credits™*. Physicians should only claim credit commensurate with the extent of their participation in the activity.

REFUNDS

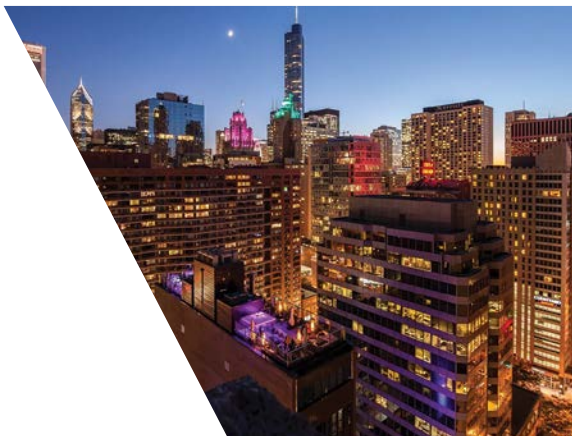
\$50 shall be retained to cover administrative expenses should you cancel your registration for any reason. In order to refund the balance, we must receive WRITTEN notice of withdrawal by August 17, 2016. No refunds will be issued thereafter.

HOTEL

Rooms have been reserved at the Hyatt Chicago Magnificent Mile, located at 633 N. St. Clair Street at a reduced rate of \$249 single/double, plus tax. Please contact the hotel at 888-591-1234 or <https://resweb.passkey.com/go/EchoNorthwestern2016> and mention ECHO NORTHWESTERN to reserve your room. Reservations made after August 17, 2016 or after the room block has filled, are subject to availability at regular hotel rates.

SPECIAL NEEDS

The Feinberg School of Medicine fully intends to comply with the legal requirements of the American with Disabilities Act. If any participant of this conference is in need of accommodation please indicate those needs on the registration form or submit written requests to the Office of CME at least one month prior to the conference date.



FACULTY DISCLOSURE

Northwestern University Feinberg School of Medicine requires course directors, speakers, instructors, planners and other individuals who are in a position to control the content of this activity to disclose any real or apparent conflict of interest they may have as related to the content of this activity. All identified conflicts of interest are thoroughly vetted by NUFSM for fair balance, scientific objectivity of studies mentioned in the materials or used as the basis for content, and appropriateness of patient care recommendations. The faculty disclosures and the discussion of off-label usage will be indicated in the course syllabus.

PROGRAM DIRECTORS

Kameswari Maganti, MD, FASE
Associate Professor of Medicine

David J. Mehlman, MD, FASE
Associate Professor of Medicine

Issam Mikati, MD, FASE
Professor of Medicine- Cardiology and Radiology
Associate Medical Director,
Echocardiography Laboratory

Vera H. Rigolin, MD, FASE
Professor of Medicine
Medical Director, Echocardiography
Laboratory
Associate Medical Director, Program for
Women's Cardiovascular Health

James Thomas, MD, FASE
Professor of Medicine
Director, Center for Heart Valve Disease

GUEST FACULTY

Saroja Bharati, MD
The Heart Institute for Children
Maurice Lev Congenital Heart and
Conduction System Center
Professor of Pathology
Rush Medical College
Chicago, Illinois

Sunil Mankad, MD, FASE
Associate Program Director for Clinical
Practice
Mayo Clinic
Minneapolis, Minnesota

Michael Picard, MD, FASE
Director of Echocardiography Lab
Massachusetts General Hospital
Boston, Massachusetts

Muhamed Saric, MD, PhD, FASE
Director of Echocardiography Lab
Associate Professor of Medicine
New York University
New York, New York

NORTHWESTERN UNIVERSITY FEINBERG SCHOOL OF MEDICINE FACULTY

Waleed Ahmed, MD
Medical Director, Cardiac Imaging
Northwestern Medicine at Central
Dupage Hospital

Nausheen Akhter, MD, FASE
Assistant Professor of Medicine

Robert O. Bonow, MD
Director, Center for Cardiovascular
Innovations
Goldberg Distinguished Professor of
Medicine

R. Andrew de Freitas, MD
Director, Adult Congenital Heart Disease
Assistant Professor of Medicine and
Pediatrics

Stephen R. Devries, MD, FASE
Associate Professor of Medicine

Micah Eimer, MD
Health System Clinician

Benjamin H. Freed, MD, FASE
Assistant Professor of Medicine

Joshua Herborn, MD
Assistant Professor of Anesthesiology

Zeina Ibrahim, MD
Advanced Imaging Fellow

Marla Mendelson, MD
Director, Heart Disease and Pregnancy
Program
Associate Professor of Medicine and
Pediatrics

Michael Monge, MD
Assistant Professor of Pediatric Surgery

Duc Thinh Pham, MD
Surgical Director, Center for Heart
Failure, Heart Transplantation and
Mechanical Assistance
Bluhm Cardiovascular Institute
Associate Professor of Surgery

Jyothy J. Puthumana, MD, FASE
Associate Professor of Medicine

Mark J. Ricciardi, MD
Medical Director, Cardiac Catheterization
Laboratory
Associate Professor of Medicine

Robert A. Silverberg, MD
Associate Professor of Medicine

Ranya N. Sweis, MD
Assistant Professor of Medicine

Patricia Vassallo, MD, FASE
Assistant Professor of Medicine

Clyde Yancy, MD, MSc
Chief, Division of Cardiology
Vice Dean, Diversity and Inclusion
Magerstadt Professor
Professor of Medicine-Cardiology and
Medical Social Sciences

NORTHWESTERN MEDICINE HOSPITAL STAFF

Asra, Azizuddin, AAS, RDCS
Bonnie Kane, BS, RDCS, FASE
Brian Fey, BA, RDCS (AE/PE), ACS, FASE
Dipa Patel, MS, RDCS
Eric DeShazo, RDCS
Erin Jensen, BA, RDCS, RVT
Inga Vaitneas, RCCS, RCS
Juliet Ryan, BS, RDCS, FASE
Madeline Jankowski, RDCS
Mary Paul, BSRT, RDCS
Robert Schultz, RDCS
Robyn Witkov, BS, RDCS
Shelley Sarson, RDCS, FASE
Tia Gordon, BS, RDCS (AE/PE)
Josh Gilles, BS, RDCS, RCCS
Rachel Sinkovitz RDCS, CCT
Michael McNeal BS, RDCS
Amelia Macheck BS, RDCS

Agend

Saturday, September 17, 2016

- 7:30 AM Registration and Breakfast
- SESSION I: VALVULAR HEART DISEASE**
Moderator: James Thomas, MD, FASE
- 8:00 AM 2D and 3D anatomy of the mitral valve
Vera Rigolin, MD, FASE
- 8:20 AM Echo quantification of valvular regurgitation
James Thomas, MD, FASE
- 8:50 AM Percutaneous options for mitral valve disease
Mark Ricciardi, MD
- 9:15 AM Imaging guidance for percutaneous mitral valve procedures
Sunil Mankad, MD, FASE
- 9:45 AM Refreshments and Exhibits
- 10:15 AM Tricuspid valve- No longer forgotten
James Thomas, MD, FASE
- 10:45 AM Cases with panel discussion and audience Q&A
Joshua Herborn, MD
Sunil Mankad, MD, FASE
Jyothy Puthumana, MD, FASE
Vera Rigolin, MD, FASE
Panel:
Duc Pham, MD
Mark Ricciardi, MD
James Thomas, MD, FASE
Clyde Yancy, MD
- 12:00 PM Lunch and exhibits
- SESSION II: VALVULAR HEART DISEASE CONTINUED**
Moderator: Vera Rigolin, MD, FASE
- 1:00 PM Diagnostic challenges and therapeutic options for aortic valve disease in 2016
Robert Bonow, MD
- 1:20 PM I have a patient with severe aortic stenosis-TAVR or SAVR?
Ranya N. Sweis, MD
- 1:40 PM Imaging guidance for TAVR: Do we still need TEE?
Sunil Mankad, MD, FASE
- 2:10 PM Prosthetic valves: Show and tell
David Mehlmán, MD, FASE
- 3:00 PM Introduction to the Echo Simulator
Jyothy Puthumana, MD, FASE
- 3:20 PM Refreshments and Exhibits

SESSION III: BREAKOUT WORKSHOPS

- 3:50 PM
1. Rapid Fire Learning Through Fascinating Cases
Northwestern Medicine and Northwestern University Feinberg School of Medicine Faculty and Staff
 2. American Society of Echocardiography Maintenance of Certification Case-Based Workshop: Congenital Heart Disease
R. Andrew DeFreitas, MD
Kameswari Maganti, MD, FASE
David Mehlmán, MD, FASE
Issam Mikati, MD, FASE
Micah Eimer, MD
 3. Echo Simulator
Jyothy Puthumana, MD, FASE
Zeina Ibrahim, MD

Sunday, September 18, 2016

- 7:30 AM Registration and Breakfast
- SESSION IV: CONGENITAL HEART DISEASE: TRICUSPID VALVE DISORDERS**
Moderator: R. Andrew de Freitas, MD
- 8:00 AM Anatomy of the tricuspid valve
Saroja Bharati, MD
- 8:25 AM My patient with Ebstein's anomaly
Marla Mendelson, MD
- 8:40 AM Imaging in Ebstein's anomaly
Andrew de Freitas, MD
- 9:00 AM Surgical correction of Ebstein's anomaly
Michael Monge, MD
- 9:20 AM Panel Discussion
- 9:30 AM Refreshments and Exhibits
- 10:00 AM My favorite tricuspid valve cases in the adult
Sunil Mankad, MD, FASE
- SESSION V: THE RIGHT VENTRICLE AND PULMONARY HYPERTENSION**
Moderator: David Mehlmán, MD, FASE
- 10:30 AM Anatomy and function of the right ventricle using echo with illustrative cases
Muhamed Saric, MD, PhD, FASE
- 11:00 AM Echo highlights in pulmonary hypertension
Issam Makati, MD, FASE
- 11:20 AM How CT and MR complement echo for evaluation of pulmonary hypertension
Benjamin Freed, MD, FASE
- 11:40 AM Constrictive pericarditis
Steve Devries, MD, FASE
- 12:00 PM Lunch and exhibits

SESSION VI: ECHO POT-POURRI

Moderator: **Kameswari Maganti, MD, FASE**

1:00 PM Case based approach to echo contrast
Patricia Vassallo, MD, FASE

1:20 PM Stress echo in 2016
Michael Picard, MD, FASE

1:50 PM Identifying the source of embolism: What can we learn from the new ASE guidelines?
Muhamed Saric, MD, PhD, FASE

2:10 PM Echo imaging of the thoracic aorta
Jyothy Puthumana, MD, FASE

2:30 PM Echo for assessing the cancer patient during treatment
Nausheen Akhter, MD, FASE

2:50 PM Echo for assessing the cancer survivor
Vera Rigolin, MD, FASE

3:10 PM Point of care echo: Who, where, when?
Michael Picard, MD, FASE

3:30 PM Audience Q&A

3:45 PM Refreshments and Exhibits

SESSION VII: BREAKOUT WORKSHOPS

4:00 PM

1. Rapid Fire Learning Through Fascinating Cases
Northwestern Medicine and Northwestern University Feinberg School of Medicine Faculty and Staff
2. American Society of Echocardiography Maintenance of Certification Case-Based Workshop: Congenital heart disease
R. Andrew DeFreitas, MD
Kameswari Maganti, MD, FASE
David Mehlman, MD, FASE
Issam Mikati, MD, FASE
Micah Eimer, MD
3. Echo Simulator
Jyothy Puthumana, MD, FASE
Zeina Ibrahim, MD

6:00 PM Adjourn

Monday, September 19, 2016

7:00 AM Registration and breakfast

SESSION VIII: HEART FAILURE

Moderator: **Issam Mikati, MD, FASE**

8:00 AM Systolic function: What is old and what is new?
Issam Mikati, MD, FASE

8:20 AM Demystifying diastology in 2016
Michael Picard, MD, FASE

8:40 AM What is strain and how do I use it?
Muhamed Saric, MD, PhD, FASE

9:00 AM Heart failure cases:
Michael Picard, MD, FASE
Muhamed Saric, MD, PhD, FASE

9:30 AM Refreshments and Exhibits

10:00 AM Pulmonary Embolism
David Mehlman, MD, FASE

10:20 AM Cardiac Assist Devices: What Are They and How can echo help?
Duc Pham, MD

10:50 AM My favorite heart failure patients who went to the OR
Robert Silverberg, MD

11:10 AM Panel Discussion
Panel:
Duc Pham, MD
Michael Picard, MD
Muhamed Saric, MD, PhD, FASE
Case Presenters:
Stephen Devries, MD, FASE
Isaam Mikati, MD, FASE
Waleed Ahmed, MD

12:00 PM Lunch and exhibits

SESSION IX: ECHO IN SYSTEMIC DISEASE

Moderator: **David Mehlman, MD, FASE**

1:00 PM Echo in patients with liver and kidney disease
Kameswari Maganti, MD, FASE

1:20 PM Invaders of the heart: A closer look at infiltrative cardiomyopathies
Benjamin Freed, MD, FASE

1:45 PM Cases with panel discussion and Audience Q&A
Case Presenters:
Benjamin Freed, MD, FASE
Kameswari Maganti, MD, FASE
David Mehlman, MD, FASE

SESSION X: ECHO IN NON-VALVULAR STRUCTURAL HEART DISEASE

Moderator: **James Thomas, MD, FASE**

2:30 PM Alcohol septal ablation
Kameswari Maganti, MD, FASE

2:45 PM Left atrial appendage closure
Jyothy Puthumana, MD, FASE

3:00 PM Refreshment break and exhibits

SESSION XI: BREAKOUT SESSIONS

3:30 PM

1. Rapid Fire Learning Through Fascinating Cases
Northwestern Medicine and Northwestern University Feinberg School of Medicine
2. Echo Simulator
Jyothy Puthumana, MD, FASE
Zeina Ibrahim, MD

5:00 PM Adjourn



Northwestern Medicine® is the shared vision that joins Northwestern Memorial HealthCare and Northwestern University Feinberg School of Medicine in a collaborative effort to transform medicine through quality healthcare, academic excellence and scientific discovery.

Office of Continuing Medical Education
Northwestern University Feinberg School of Medicine
240 E. Huron, Suite 1-200
Chicago, IL 60611

ECHO Northwestern
38th Annual Program

Chicago, Illinois

Non-Profit
U.S. Postage
PAID
Permit #374
Skokie, IL