

Recognize • Reflect • Respond
ρεcognition • ρejection • ρeapon

Georgia
Chapter



New York
Chapter

 **Piedmont**
HEART

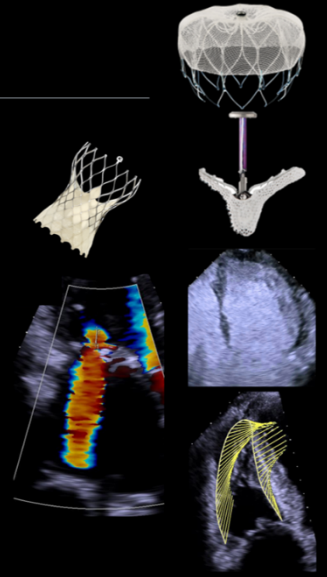
MARCUS
HEART VALVE
CENTER


**Mount
Sinai**

Virtual Education Series 2020 - 2021

Re-iMAGINE

Echo NEW YORK



Program Co-Directors

Jagat Narula DM, PhD, MACC, FAHA, FRCP (Edin)
Mani A. Vannan MBBS, FACC, FAHA, FASE, MRCP (UK), MRCP (I)
David Adams MD FACC
Edgar Argulian MD, FACC, FASE
Stamatis Lerakis MD, FACC, FASE

Sara Mobasser MD, FACC, FASE
Theresa Green RDCS
Margaret M. Park ACS, RVT, RDSC, FASE
Smadar Kort, MD, FACC, FASE, FAHA
Julia Graspa MD PhD, FACC

Peer faculty teaching ... Unique insights from masters... Global conversation... Attaining Imaging ZEN...

October 10 • 11 • 17 • 18 | November 7 • 8 • 15 | December 5 • 6 • 19 • 20 | January 9 • 10 • 23 • 24 • 31 | February 6 • 7 • 13

Re-iMAGINE | Echo New York 2020-2021 Virtual Education Series

19 Sessions: October 10 · 11 · 17 · 18 | November 7 · 8 · 15 | December 5 · 6 · 19 · 20 | January 9 · 10 · 23 · 24 · 31 | February 6 · 7 · 13

SERIES FORMAT (2.5 hours each)



REFLECT – Top 10 Facts/Essentials (15 mins)



RECOGNIZE – Technical Tips and Tricks (15 mins)



REWIND – Case Studies (15 mins)



RESPOND – Questions and Discussion (10 mins)



BREAK AND VIRTUAL EXHIBIT (10 mins)

Saturday, October 10th – The Right Heart I

9:30 AM to Noon, EST USA

Moderator: Monica Mukherjee MD MPH FAHA FACC FASE, Baltimore, MD



Top 10 Truthisms

Luigi Badano MD FESC FASE, Milan, Italy



Size and Function

Lanqi Hua ACS RDCS APCA FASE, Boston, MA



How to Resolve Discrepant Numbers?

Lawrence Rudski MD FACC FASE, Montreal, Canada



Incremental Value of 3D Echo

Masaaki Takeuchi MD PhD FASE FACC FESC FEACVI FJCC, Kitakyushu, Japan



Questions and Discussion



BREAK and VIRTUAL EXHIBIT



RV Strain: Always or Selectively?

Monica Mukherjee MD MPH FAHA FACC FASE, Baltimore, MD



RV Strain Technical Tips and Tricks

Tom Van Houten RDCS, San Diego, CA



Incremental Value of RV Strain

Serkan Unlu MD MSc PhD, Turkey



RV Strain, 3D Echo, CMR in ARVD: What Do I Do?

Kristina Haugaa MD PhD FESC, Oslo, Norway



Questions and Discussion

Sunday, October 11th – The Right Heart II

9:30 AM to Noon, EST USA

Moderator: Denisa Muraru MD PhD FESC, Milan, Italy



Contribution of Non-Longitudinal Mechanics

Attila Kovacs MD PhD FASE FESC, Budapest, Hungary



Right Heart Pressures: The Essentials

Laura T. Boone BS RDCS RVT RDMS RT(R), Greenwood, SC



RV-PA Coupling: What is it? How to Measure?

Chi Young Shim MD, PhD, Seoul, Korea



Exercise PA Pressures: Why and How?

Eduardo Bossone MD PhD, Naples, Italy



Questions and Discussion



BREAK and VIRTUAL EXHIBIT



Tricuspid Regurgitation: Quality Checklist

Eric Kruse BS ACS RDCS RVT FASE, Chicago. IL



TR Severity Assessment: My Routine

Denisa Muraru MD PhD, Milan, Italy



RV Function in TR

Victoria Delgado MD FESC, Leiden, The Netherlands



What is the Cause of this TR, What Will You Do?

Sorina Mihaila Baldea MD PhD, Bucharest, Romania



Questions and Discussion

Saturday, October 17th – Structural Heart Intervention: The Heart-Brain Team in NVAF

9:30 AM to Noon, EST USA

Moderator: Jacqueline Saw MD FRCPC FACC, Vancouver, Canada



LAA Anatomy: The Essentials

Francesco Faletra MD, Lugano, Switzerland



Imaging to Plan LAA Device Closure

Dee Dee Wang MD, Detroit, MI



Patient-Specific Computer Simulation to Plan Device Closure

Philippe Garot, Massay, France



TEE Guidance of Device Closure

Poonam Velagapudi MD MS FACC, Omaha, NE



Questions and Discussion



BREAK and VIRTUAL EXHIBIT



ICE Guidance of LAA Device Closure

Jens Erik Nielsen-Kudsk MD DMSc, Aarhus, Denmark



3D ICE Guidance of LAA Closure

Carlos Sanchez MD, Columbus, OH



Fusion Imaging to Guide LAA Closure

Julieta Morales MD, Mexico City, Mexico



Post-Device Closure Surveillance

Jacqueline Saw MD FRCPC FACC, Vancouver, Canada



Questions and Discussion

Sunday, October 18th – Primary Mitral Regurgitation

9:30 AM to Noon, EST USA

Moderator: Stephen Little MD FACC FASE, Houston, TX



Anatomical Phenotypes in Primary MR
Nadeen N. Faza MD, Houston USA



MR Quantification: Echo Quality Checklist
Teresa Navies RDCS, Atlanta, GA



Echo-Doppler Grading of MR: How Do I Put it Together?
TBD



“Moderate MR,” Dilated LV, LV EF 50%: How to Resolve?
Roshin C. Mathew MD, Atlanta, GA



Questions and Discussion



BREAK and VIRTUAL EXHIBIT



Mitral-Annular Disjunction
Dimosthenis Pandis MD MSc DIC, New York, NY



Mitral-Annular Disjunction: What Will You Do?
Ozge Ozden Tok MD, Istanbul, Turkey



Surgical or Trans-catheter Candidate?
Ritu Thamman MD FACC FASE, Pittsburgh, PA



What Phenotype is This Primary MR, What Will You Do?
Stephen Little MD FACC FASE, Houston, TX



Questions and Discussion

Saturday, November 7th – Functional and Mixed Etiology Mitral Regurgitation

9:30 AM to Noon, EST USA

Moderator: TBD



Secondary MR Phenotypes
Yogesh N.V. Reddy MD MSc, Rochester, MN



Echo-Doppler Quantification: Quality Checklist
Bryan Doldt BS RDCS FASE, Boston, MA



Echo Grading of FMR: My Routine
TBD



CMR in Discrepant Echo Grading
Edgar Argulian MD MPH FACC FASE, New York, NY



Questions and Discussion



BREAK and VIRTUAL EXHIBIT



Functional MR Phenotype Clusters
Georg Goliash MD FESC, Vienna, Austria



What Phenotype is This Secondary MR, and What Will You Do?
Greg Scalia MBBS (Hons) MMedSc FRACP FCSANZ FACC FASE JP, Brisbane, Australia



What is the Cause of this MR and What Will You Do?
Nishtha Sodhi, MD, FACC FASCAI Charlottesville, VA



What is the Cause of this MR and What Will You Do?
Konstantinos Papadopoulos, MD PhD FEACVI, Pylea Thessaloniki, Greece



Questions and Discussion

Sunday, November 8th – Structural Heart Intervention: The Heart Valve Team (Mitral Valve)

9:30 AM to 12:05 PM, EST USA

Moderator: Azeem Latib MD, New York, NY



Primary MR with a Cleft

Vibhav Rangarajan MD and Pradeep Yadav MD, Atlanta, GA



Barlow MR

Dee Dee Wang MD FACC FASE FCCT and Bryan P. O'Neill MD FACC FSCAI



Questions and Discussion



BREAK and VIRTUAL EXHIBIT



Small Mitral Annulus MR

Ythan Goldberg MD and Azeem Latib MD, New York, NY



MAC MS/MR

TBD and Mayra Guerrero MD, Rochester, MN



TMVR

Smadar Kort MD FACC FASE FAHA and Puja Parikh MD MPH FACC FAHA FSCAI



Questions and Discussion

Sunday, November 15th – 3D Echocardiography (TTE)

9:30 AM to Noon AM, EST USA

Moderator: Luigi Badano MD FESC FASE, Milan Italy



Quality Checklist for LV Function

Sally Miller BS RDCS RT(R) FASE, Rochester, MN



3D Left Heart in NSR: Our Way

Megan Yamat RDCS RCS FASE ACS, Chicago, IL



3D Left Heart in AF: Our Way

Kevin Moreau RDCS ARDMS, Atlanta, GA



CMR vs 3D and 2D Contrast and Non-Contrast LV Volume/EF

Harold Becher MD PhD FRCP, Winnipeg, Canada



Questions and Discussion



BREAK and VIRTUAL EXHIBIT



3D RV Function: My Approach

Elena Surkova MD PhD, London, UK



3D of the LA: Why and How?

Luigi Badano MD, FESC, FACC



3D CFD for MR

Cayla Casaletta RDCS, Atlanta, GA



3D CFD Helped In this Case

Lissa Sugeng MD MPH FACC FASE, New Haven, CT



Questions and Discussion

Saturday, December 5th – 3D Echocardiography (TEE)

9:30 AM to Noon, EST USA

Moderator: Roberto Lang MD FACC FASE FRCP, Chicago, IL



Transillumination: Virtual Reality Meets Echocardiography

Roberto Lang MD, Chicago, IL



How Do I Quantify Mitral Anatomy?

Hani-Mahmoud Elsayed MBBCh MSc MD FESC FASE, Greater Cairo, Egypt



When and How I Assess Mitral Annular Dynamics?

Nina Ajmone Marsan MD FESC, The Netherlands



Imaging The Tricuspid Valve: How to Maximize Yield and Benefit?

Eustachio Agricola MD FESC, Milan, Italy



Questions and Discussion



BREAK and VIRTUAL EXHIBIT



Aortic Root Pathology: When Do I Do 3D?

Bernard Cosyns MD PhD FESC, Brussels, Belgium



How Do I Quantify Aortic Root Anatomy?

Peter Flueckiger MD FACC FASE, Atlanta, GA



Prosthetic Valves: My Approach

Sunil Mankad MD FACC FASE, Rochester, MN



Atrial Septal Defects: When is it Helpful?

Alex Lee MD, Hong Kong, China



Questions and Discussion

Sunday, December 6th – Myocardial Strain I

9:30 AM to Noon, EST USA

Moderator: Mani A. Vannan MBBS FASE FACC FAHA, Atlanta, GA



GLS: What is it?

Thor Edvardsen MD PhD FESC, Oslo, Norway



GLS: Quality Checklist

Kayla Lambert RDCS, Atlanta, GA



GLS in Routine Practice: This is How I Apply It

Liza Thomas MBBS FRACP PhD, Sydney, Australia



GLS in CAD

Leyla Elif Sade MD MESC, Ankara, Turkey



Questions and Discussion



BREAK and VIRTUAL EXHIBIT



GCS / Torsion: What is it?

Gianni Pedrizzetti PhD, Trieste, Italy



Technical Tips and Tricks

Margaret Park BS ACS RDCS RVT FASE, Cleveland, OH



GLS 14%, EF 58%

Mani A. Vannan MBBS FASE FACC FAHA, Atlanta, GA



GLS + GCS: This is How I Apply It

Tor Biering Sorensen MD PhD MPH, Copenhagen, Denmark



Questions and Discussion

Saturday, December 19th – Myocardial Strain II

9:30 AM to Noon, EST USA

Moderator: Theodore Abraham MD, San Francisco, CA



Top 10 Imaging Pearls for Amyloid Heart Disease

Renee Bullock-Palmer MD FACC FAHA FASNC FASE FSCCT, Browns Mills, NJ



Apical Sparing in Amyloid

Bonita Anderson DMU MAppSc AMS ACS FASE FASA, Brisbane, Australia



The Science of Apical Sparing

Sharmila Dorbala MD MPH, Boston, MA



Non-Apical Sparing Amyloid

Vasvi Singh MD, Buffalo, NY



Questions and Discussion



BREAK and VIRTUAL EXHIBIT



ECV, Interstitial and Replacement Fibrosis, and GLS

Erik Schelbert MD MS, Pittsburgh, PA



Aortic Stenosis

Julien Magne PhD, France



Mitral Regurgitation

Xiao Zhou, MD, PLA, Beijing, China



Familial Cardiomyopathies

Theodore Abraham MD FACC FASE, San Francisco, CA



Questions and Discussion

Sunday, December 20th – Cardio-Oncology

9:30 AM to Noon, EST USA

Moderator: Bonnie Ky MD MSCE FACC , Philadelphia, PA



Who is at Risk and What is the Risk?

Bonnie Ky MD MSCE FACC, Philadelphia, PA



Echocardiographic Monitoring: What Do I Do and Why?

Geeta Gulati MD PhD, Ullevaal, Norway



LV Dysfunction in HER2 Targeted Therapy

Jennifer Liu MD FACC FASE, New York, NY



GLS + Biomarkers: How Do I Apply?

Marielle Scherrer-Crosbie MD PhD FACC FASE, Philadelphia, PA



Questions and Discussion



BREAK and VIRTUAL EXHIBIT



CMR: When and Why?

Chiara Bucciarelli-Ducci MD PhD FESC FRCP, Bristol, UK



Asymptomatic Decline in EF or GLS: What Does it Mean?

Dinesh Thavendiranathan MD SM, Toronto, Canada



Pericardial Complication of Cancer

Zuilma Vasquez-Ortiz MD, Mexico City, MX



Valve Disease Post-Chest Radiation

Frank A. Flachskampf MD PhD FESC FACC, Uppsala, Sweden



Questions and Discussion

Saturday, January 9th – Contrast Echocardiography 2021

9:30 AM to Noon, EST USA

Moderator: Sharon Mulvagh MD FRCPC FACC FASE FAHA, Rochester, MN



LV Linear Measurements: Non-contrast and Contrast TTE

Monet Strachan ACS RDCS FASE, San Diego, CA



How to Optimize UEA Echocardiography for LVO?

Joan Olson RDCS, Omaha, NE



WT, RWT, LV Mass: Non-contrast vs Contrast vs CMR

Charlotte Lee BS, Atlanta, GA



BENEFITS of CE for LV Volumes and EF (vs CMR)

Sharon Mulvagh MD FRCPC, FACC FASE, FAHA, Halifax, Canada



Questions and Discussion



BREAK and VIRTUAL EXHIBIT



Reporting LV Size and Mass: Non-contrast vs Contrast

Raymond Stainback MD FACC FASE, Houston, TX



UEAs Beyond Suboptimal Echo

Michael Main MD FACC FASE, Kansas City, MO



How Do I Use UEAs in My Daily Practice?

Thomas Porter MD FACC FASE, Omaha, NE



How Do I Use UEAs in My Daily Practice?

Roxy Senior MD FESC, London, UK



Questions and Discussion

Sunday, January 10th – Echo Yoga: Finding Imaging Zen

9:30 AM to Noon, EST USA

Moderator: Julia Grapsa MD PhD FACC, London, UK



A Novelty

Sarah Roemer BS RDCS FASE, Milwaukee, WI



A Storm

Carlos Astudillo MD, Vino del Mar, Chile



A Trick

Vaani Garg MD, New York, NY



A Mystery

Delilah Kimambo MD and Engerasiya Kifai MD, Daar es Salam, Tanzania



Questions and Discussion



BREAK and VIRTUAL EXHIBI



A Nightmare

Edwin Tucay MD, Manila, Philippines



A Sci-Fi (not)

Akhil Narang MD, Chicago, IL



A Pitfall

Jennifer Schaff BS ACS RDCS FASE, Cincinnati, OH



A Save

Purvi Parwani MD, Loma Linda, CA



Questions and Discussion

Saturday, January 23rd – Aortic Stenosis

9:30 AM to Noon, EST USA

Moderator: William Zoghbi MD FASE FAHA MACC, Houston, TX



Staging vs Classification in AS

Philippe Pibarot DVM PhD FACC, Quebec City, Canada



Echo-Doppler Pearls in AS: Must-Know, Must-Do

Theresa Green RDCS, Atlanta, GA



Methodical Problem Solving in Discrepant Echo Findings

William Zoghbi MD FASE FAHA MACC, Houston, TX



Low-Flow, Normal EF, Small AVA: What Do I Do?

Marie-Annick Clavel DVM PhD FAHA, Quebec City, Canada



Questions and Discussion



BREAK and VIRTUAL EXHIBIT



Low-Flow, Low EF, Small AVA: DSE vs CT Calcium Score

Ian Burwash MD, Ottawa, Canada



How and Why Do I Want to Assess The LV?

Marc Dweck MD, Edinburgh, UK



LVH and AS: Can I Tell If This is Amyloid LV?

Joao Cavalcante MD FACC, Minneapolis, MN



Severe AS Phenotype Clusters and Outcomes

Seung-Pyo Lee MD PhD, Seoul, Korea



Questions and Discussion

Sunday, January 24th – Bicuspid Aortic Valve/Aortic Regurgitation

9:30 AM to Noon, EST USA

Moderator: Hector Michelena MD FACC FASE, Rochester, MN



Echo-Doppler for AR: What Do I Do?

JD Cochran RCS, Atlanta, GA



CMR Helped in This Case to Quantify AR

Soheila Talebi MD FACC FASE FASNC, New York, NY



How Do I Use Echo/CT in Assessing the Aortic Root?

Kikuko Obase MD, Nagasaki, Japan



BAV Phenotypes

Geu-Ru Hong MD PhD, Seoul, Korea



Questions and Discussion



BREAK and VIRTUAL EXHIBIT



How Do I Assess AV Sparing/Repairability?

Jean-Louis Vanoverschelde MD PhD, Brussels, Belgium



How Do I Decide Timing on Intervention in Chronic AR?

Richard Grimm DO, Cleveland, OH



What is the Cause of this AR? What Will You Do?

Julia Grapsa, London, UK



How Do I Decide Timing on Intervention in BAV?

Hector Michelena MD, Rochester, MN



Questions and Discussion

Sunday, January 31st – Structural Heart Intervention: The Heart Valve Team (Aortic Valve)

9:30 AM to 12:05 PM, EST USA

Moderator: Vinod Thourani MD FACC, Atlanta, GA



Small Aortic Annulus

Satinder Singh MD FCCP FNASCI FSABI and Mustafa Ahmed MD FACC Birmingham, AL



Coronary Access/Low Coronary Height

Stamatios Lerakis MD FACC FASE and Annapoorna Kini MD FACC, New York, NY



Bicuspid AS

Muhammed Saric MD PhD FACC FASE and Hasan Jilaihawi MD FACC, New York, NY



Questions and Discussion



BREAK and VIRTUAL EXHIBIT



Bioprosthetic AS

Faisal Nabi MD FACC and Michael Reardon MD FACC, Houston, TX



Pure AR

Nadira Hamid MD FACC and Torsten P. Vahl MD FACC, New York, NY



Questions and Discussion

Saturday, February 6th – Structural Heart Intervention: The Heart Valve Team (Tricuspid Valve)

9:30 AM to 12:05 PM, EST USA

Moderator: Rebecca Hahn MD FACC FASE, New York, NY



Primary TR

Richard Bae MD FACC FASE and Paul Sorajja MD FACC FAHA FSCAI, Minneapolis, MN



Functional TR

Renuka Jain MD and Suhail Allaqaband MD, Milwaukee, WI



Questions and Discussion



BREAK and VIRTUAL EXHIBIT



Pacemaker TR

TBD and TBD



Large-Coaptation Gap/Annulus

TBD and Ralph Stephan von Bardeleben MD, Mainz, Germany



TV Replacement

Rebecca Hahn MD and Susheel Kodali MD, New York, NY



Questions and Discussion

Sunday, February 7th – Diastolic Function and HFpEF

9:30 AM to Noon, EST USA

Moderator: Sherif Nagueh MD FACC FASE FAHA, Houston, TX



Echo for Diastology: Quality Checklist

Ashlee Davis BS ACS RDCS FASE, Durham, NC



Echo-Doppler: This is My Routine

Sherif Nagueh MD FACC FASE FAHA, Houston, TX



Predictive Value of Echo-Doppler for HFpEF

Masaru Obokata MD, PhD Rochester, MN



Reversible Diastolic Dysfunction

Bogdan Popescu MD PhD FESC FACC, Bucharest, Romania



Questions and Discussion



BREAK and VIRTUAL EXHIBIT



How Do I Use LA Strain?

Amita Singh MD, Chicago, IL



LA Strain: Refines or Replaces Doppler?

Elisabeth Pieske-Kraigher MD, Berlin, Germany



Stress Doppler in HFpEF

Jong-Won Ha MD, Seoul, Korea



Clustering Models in HFpEF

Erwan Donal MD PhD, Paris, France



Questions and Discussion

Saturday, February 13th – Challenges in Heart Valve Disease

9:30 AM to Noon, EST USA

Moderator: Jeroen Bax MD PhD FESC FACC, Leiden, The Netherlands



AS and AR

Zoran Popovic MD PhD, Cleveland, OH



MS and MR

Patrizio Lancellotti MD PhD FESC, Leige, Belgium



AS and MR

Christophe Tribouilloy MD PhD, Paris, France



Moderate AS and LV Dysfunction

Jeroen Bax MD PhD FESC FACC, Leiden, The Netherlands



Questions and Discussion



BREAK and VIRTUAL EXHIBIT



Severity of AS in AF

Sorin Pislaru MD PhD FACC FASE, Rochester, MN



MAC "MS": Gradient or Area or Both?

TBD



AS and MAC MS

Anna Sannino MD, Dallas, TX



Severe 2 m/sec TR: Is There PHTN?

Yan Topilsky MD, Rochester, MN



Questions and Discussion